



FACILITY SOLUTIONS

System solutions for
Office, conference and meeting rooms

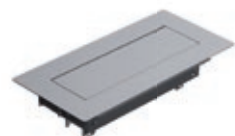
FACILITY SOLUTIONS

Desk connection panels



CONFERENCE..... 6

Practical power and data supply. Recessed in the top of the desk or table when not in use. Simply press down with your thumb to open the unit. Features a spring clip, can be closed once cables have been connected.



TOP FRAME..... 8

TOP FRAME is the new power and data supply solution for conference facilities.

Cover can be completely recessed, allowing power and data to be conveniently accessed from any seat around the table.



CONI..... 12

Unrestricted access to power and data at the table or desk. Integrated into the work surface together with connected cables. The integrated brush insert prevents cables jamming.



CONI DUO..... 16

CONI twin pack. Designed especially for use with small meeting tables, which have energy and data connections on opposite sides.



CONI COVER 20

Elegant access to separate power supply units under the desk or table. Also ideal for retrofitting. Features integrated brush insert, can be closed even with connecting cables plugged in.



CONEO..... 22

The quick and easy solution for the smart integration of power- and data connections into your desk or table top.



POWER FRAME COVER 24

The amazing evolution of the POWER FRAME. An elegant and attractive aluminium cover which matches the aesthetic of stylish offices or conference rooms.



POWER FRAME..... 26

For an integrated power and data supply to workstations. Versatile application options. The power strip simply clicks into the built-in frame.



DUE 30

DUE is the ideal power strip for kitchens. An elegant power connection is also guaranteed when used in the office or other sectors. With its interchangeable covers, it can be colour-coordinated to its surroundings or create accents as desired, even after installation.



PIX..... 32

Versatile, minimalist connector units with interchangeable decorative rings to add a touch of colour.

ELEVATOR 34

Designed for a standard hole diameter of 79 mm, ELEVATOR is a compact powerhouse.
Recessed in the top of the desk or table when not in use, simply touch to raise.



LIFT 36

A practical combination of sophisticated looks and precision mechanical design. Recessed in the top of the desk or table when not in use. Simply touch to raise. Docking options on four sides.



DESK 2 38

The new generation of the Desk range, with superior design credentials. The modularity for which Bachmann is renowned ensures adaptability to future requirements.



DESK 1 40

Ideal where workstations have to be flexible. Modular design for individual configuration of communication and power supply connections. Fixed or free-standing installation.



STEP 44

For flexible power and data supply at workstations, in partition systems, false floors, etc. Consistent modularity means that the possibilities are virtually endless.



Custom modules

Custom modules 48

The word custom appears in this catalogue wherever the modules can be flexibly interchanged.
Custom modules: Bachmann FACILITY SOLUTIONS can be adapted to perfectly match individual requirements for data, video and audio connections.



Media technology

HDBaseT Switch..... 58

The plug-and-play solution for meeting points and meeting rooms



Accessories, cables & cable management 60



World of opportunities



Function modules can be integrated ex factory



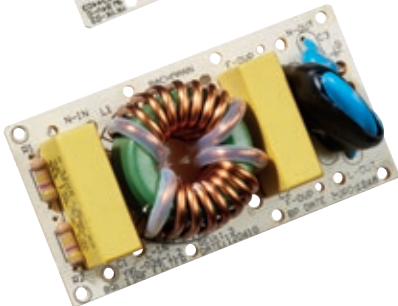
Anti-theft bracket

This stainless steel lock bracket is a permanent fixture and allows a Kensington lock to be attached. Anti-theft protection for mobile hardware such as laptops, desktop PCs, projectors, LCD screens, tablets, etc.



Overvoltage protection

These days the failure of electrical and electronic equipment is a real nightmare scenario. Protection against excess electric voltage is more important than ever for electrical and electronic equipment. "24/7 availability" is now essential for many users. Don't worry: the Bachmann strip with built-in overvoltage protection is the answer.



Mains and frequency filters

Mains and frequency filters ensure effective screening and smoothing of the input voltage. Only "clean" voltage gets through our mains and frequency filters. Voltage stabilisation and the filtering out of disturbance frequencies allows the connected device to run properly and smoothly.



Loudspeaker module

Make direct broadcasts - without making a lot of noise. A Bachmann loudspeaker module used for a presentation, video or phone conference allows you to make direct broadcasts. The overall volume of the indirect broadcast can therefore be reduced significantly. Our modules are available in 8 ohm and also 100V technology.



USB hub 3.0

The USB 3.0 hub is an active component. It has a plug mains adaptor, that supplies the connected USB devices with power.

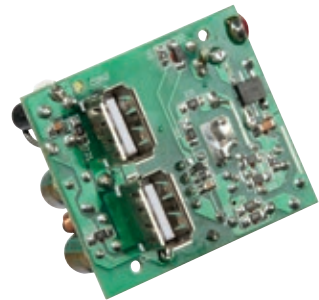
USB 3.0 keystone module

The USB keystone module supports USB 3.0 and allows data to be transferred at high speed. Three different socket/socket combinations are available for different configurations.



USB charger

The USB charger component has two ports with max. 2.15 A. Integrated in Bachmann products, the ability to charge mobile devices using the universal USB charger is very convenient and the integrated mains adaptor frees up socket outlets too.



Residual current circuit breaker / miniature circuit breaker

The residual current circuit breaker / miniature circuit breaker integrated in a Bachmann strip gives you peace of mind. The user can select between the two circuit breakers. But they can of course be combined too.



Data switch

Small, compact and can be integrated in Bachmann power strips: the high-speed network data switch provides PoE (Power over Ethernet) for selected devices.



Automatic switchoff

The automatic switchoff unit allows efficient savings in power consumption by modern-day office equipment during non-working hours. Switching equipment off completely is no longer left to chance: power saving now begins as soon as the workstation PC is shut down. The effectiveness of this system exceeds the savings possible with master-and-slave multiple-socket outlets, since virtually no standby current is drawn by the master device and total power consumption during on-working hours is zero.



Bachmann products provide solutions that are as individual as life itself.

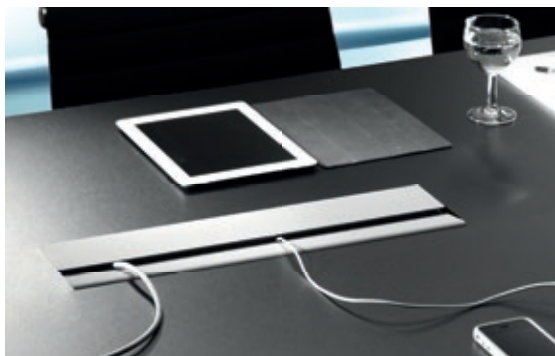




CONFERENCE

Setting a design standard

Ideal for conference and training desks, tables and high-grade workstations alike, CONFERENCE is a truly refined and discreet solution for individual access to power and data connections.



Benefits at a glance

- Integrated into your desktop or tabletop
- Simply press with your finger to open
- Flap can be closed with cables plugged in
- For both surface mounting (e.g. if retrofitting) and flush mounting
- Can be fitted flush with the tabletop
- Suitable for veneer finishing
- Configuration can be freely selected (see custom modules from page 48)
- Complete power strip can be quickly interchanged

CONFERENCE with frame

- Chamfered side panels, can be flush-mounted on desk or table surface
- Includes quick-change mechanism for swapping power strips
- Includes fixing claws and fitting instructions with cut-out dimensions

Part no. | Version

CONFERENCE built-in frame, short Moonstone metallic

- 338.0201
- Outer dimensions: approx. 284.6 x 182.4 mm, built-in dimensions: approx. 268.6 x 166.4 mm
 - Built-in depth: 110 mm

CONFERENCE built-in frame, long Moonstone metallic

- 338.0200
- Outer dimensions: approx. 466.1 x 182.4 mm, built-in dimensions: approx. 450.1 x 166.4 mm
 - Built-in depth: 110 mm

CONFERENCE built-in frame, short Silver grey, similar to RAL9006

- 338.0219
- Outer dimensions: approx. 284.6 x 182.4 mm, built-in dimensions: approx. 268.6 x 166.4 mm
 - Built-in depth: 110 mm

CONFERENCE built-in frame, long Silver grey, similar to RAL9006

- 338.0221
- Outer dimensions: approx. 466.1 x 182.4 mm, built-in dimensions: approx. 450.1 x 166.4 mm
 - Built-in depth: 110 mm

CONFERENCE built-in frame, short Chrome effect finish

- 338.0210
- Outer dimensions: approx. 284.6 x 182.4 mm, built-in dimensions: approx. 268.6 x 166.4 mm
 - Built-in depth: 110 mm

CONFERENCE built-in frame, long Chrome effect finish

- 338.0212
- Outer dimensions: approx. 466.1 x 182.4 mm, built-in dimensions: approx. 450.1 x 166.4 mm
 - Built-in depth: 110 mm



Figure: Similar colour used

CONFERENCE frameless

Part no. | Version

CONFERENCE built-in frame for below table, short Silver grey, similar to RAL9006

- 338.0231
- Dimensions (visible surface): approx. 261.5 x 119 mm
 - Built-in depth: 107 mm

CONFERENCE built-in frame for below table, long Silver grey, similar to RAL9006

- 338.0230
- Dimensions (visible surface): approx. 442.5 x 119 mm
 - Built-in depth: 107 mm



You will find suitable power strips for CONFERENCE and TOP FRAME on pages 10 and 11



TOP FRAME

Perfect elegance

TOP FRAME is the new power and data supply solution for conference facilities. Cover can be completely recessed, allowing power and data to be conveniently accessed from any seat around the table. TOP FRAME's balanced geometry fits elegantly into the tabletop, so even high-quality veneers can be applied to the tables or desks.



Benefits at a glance

- Access to power supply and data from any seat
- Opens silently: just press lightly with a finger and it opens and closes again
- Integrated into your desktop or tabletop
- Can be fitted flush with the tabletop
- Version with surround frame suitable for retrofitting
- Suitable for veneer finishing
- Configuration can be freely selected
- Complete power strip can be quickly interchanged without the use of tools

TOP FRAME frameless

- Includes fixing accessories

Part no. | Version

TOP FRAME base		Black
----------------	--	-------

TOP FRAME base without flap, black powder-coated housing		
925.100	<ul style="list-style-type: none"> 4-way Dimensions (L x W x H): approx. 300 x 92 x 98 mm 	
925.101	<ul style="list-style-type: none"> 8-way Dimensions (L x W x H): approx. 482.5 x 92 x 98 mm 	

TOP FRAME cover		blasted and EV1 anodised
-----------------	--	--------------------------

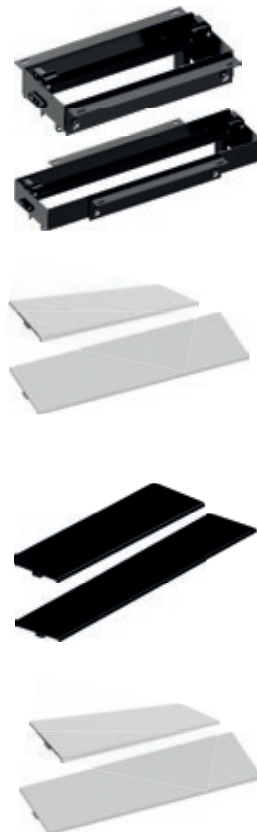
TOP FRAME blasted and anodised cover, with fixing screws		
925.0044	<ul style="list-style-type: none"> 4-way for mounting on TOP FRAME base (Part no. 925.100) 	
925.0034	<ul style="list-style-type: none"> 8-way for mounting on TOP FRAME base (Part no. 925.101) 	

TOP FRAME cover		blasted and black anodised
-----------------	--	----------------------------

TOP FRAME blasted and black anodised cover, with fixing screws		
925.0047	<ul style="list-style-type: none"> 4-way for mounting on TOP FRAME base (Part no. 925.100) 	
925.0049	<ul style="list-style-type: none"> 8-way for mounting on TOP FRAME base (Part no. 925.101) 	

TOP FRAME cover		EV1 anodised
-----------------	--	--------------

TOP FRAME EV1 anodised cover, with fixing screws		
925.0022	<ul style="list-style-type: none"> 4-way for mounting on TOP FRAME base (Part no. 925.100) 	
925.0023	<ul style="list-style-type: none"> 8-way for mounting on TOP FRAME base (Part no. 925.101) 	



TOP FRAME with frame

- Includes fixing accessories

Part no. | Version

TOP FRAME, short		Silver grey similar to RAL 9006
------------------	--	---------------------------------

Asymmetrical surround frame, for 4-way power strip		
925.500	<ul style="list-style-type: none"> Aluminium flap, silver grey similar to RAL9006, black powder-coated housing Dimensions (L x W x H): approx. 340.5 x 162 x 98.35 mm 	

TOP FRAME, long		Silver grey similar to RAL 9006
-----------------	--	---------------------------------

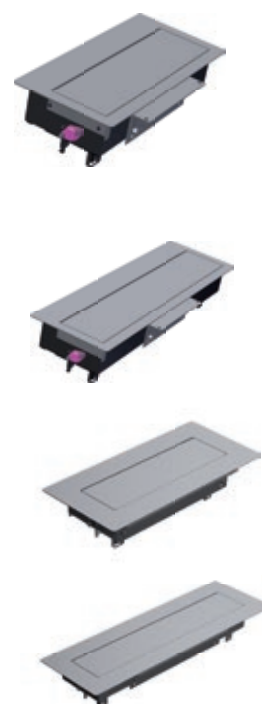
Asymmetrical surround frame, for 8-way power strip		
925.501	<ul style="list-style-type: none"> Aluminium flap, silver grey similar to RAL9006, black powder-coated housing Dimensions (L x W x H): approx. 523 x 162 x 110 mm 	

TOP FRAME, short		Silver grey similar to RAL 9006
------------------	--	---------------------------------

Symmetrical surround frame, for 4-way power strip		
925.800	<ul style="list-style-type: none"> Aluminium flap, silver grey similar to RAL9006, black powder-coated housing Dimensions (L x W x H): approx. 400.5 x 192 x 98.35 mm 	

TOP FRAME, long		Silver grey similar to RAL 9006
-----------------	--	---------------------------------

Symmetrical surround frame, for 8-way power strip		
925.801	<ul style="list-style-type: none"> Aluminium flap, silver grey similar to RAL9006, black powder-coated housing Dimensions (L x W x H): approx. 583 x 192 x 98.35 mm 	





Preassembled plug and play solutions

Part no. | Version

4-way: custom modules + power socket outlet**Length: approx. 260 mm**

Anodised aluminium profile; power input: GST18i3 plug, power output: GST18i3 socket

- | | |
|---------|---|
| 909.156 | <ul style="list-style-type: none"> · 1 x UK 3.15 A individually fused, shuttered, black, set at 45° · 1 x Keystone module CAT6 RJ45 coupling socket/ socket · 1 x Keystone module HDMI socket/socket · 1 x Custom module 1 x VGA socket and 3.5 mm stereo miniature jack with approx. 0.1 m cable |
|---------|---|

**U****8-way: 1 x USB double charger (5.2V/ 2.15A) + custom modules + power socket out****Length: approx. 444 mm**

Anodised aluminium profile; power input: GST18i3 plug, power output: GST18i3 socket

- | | |
|---------|--|
| 909.157 | <ul style="list-style-type: none"> · 3 x UK 3.15 A individually fused, shuttered, black, set at 45° · 1 x USB double charger (5.2V/ 2.15A) · 2 x Keystone module CAT6 RJ45 coupling socket/socket · 1 x Custom module 1 x HDMI, 1 x VGA socket and 3.5 mm stereo miniature jack with approx. 0.2 m cable |
|---------|--|



Ready to customise: power strips 4-way

Power cables and custom modules are available separately.

Part no. | Version

C**4-way: 2 x custom modules + power socket outlet****Length: approx. 260 mm**

Anodised aluminium profile; power input: GST18i3 plug, power output: GST18i3 socket

- | | |
|----------|--|
| 909.0024 | · 1 x UK 3.15 A individually fused, shuttered, black, set at 45° |
| 909.0023 | · 2 x UK 3.15 A individually fused, shuttered, black, set at 45° |

**C****4-way: 4 x custom module****Length: approx. 260 mm**

Anodised aluminium profile; without power connection

- | | |
|---------|--------------------------|
| 909.000 | · without socket outlets |
|---------|--------------------------|

Ready to customise: power strips 8-way

Power cables and custom modules are available separately.

Part no. | Version

8-way: 1 x USB double charger (5.2 V/2.15 A) + custom modules + power socket outlets L: approx. 444 mm

U C

Anodised aluminium profile; power input: GST18i3 plug, power output: GST18i3 socket

- 909.0058 |
- 3 x UK 3.15 A individually fused, shuttered, black, set at 45°
 - 1 x USB double charger, 2 x custom module



8-way: 5 x custom module + power socket outlet

Length: approx. 444 mm

C

Anodised aluminium profile; power input: GST18i3 plug, power output: GST18i3 socket

- 909.0029 |
- 2 x UK 3.15 A individually fused, shuttered, black, set at 45°



8-way: 4 x custom module + power socket outlet

Length: approx. 444 mm

C

Anodised aluminium profile; power input: GST18i3 plug, power output: GST18i3 socket

- 909.0028 |
- 2 x UK 3.15 A individually fused, shuttered, black, set at 45°



8-way: 3 x custom module + power socket outlet

Length: approx. 444 mm

C

Anodised aluminium profile; power input: GST18i3 plug, power output: GST18i3 socket

- 909.0027 |
- 3 x UK 3.15 A individually fused, shuttered, black, set at 45°



8-way: 2 x custom module + power socket outlet

Length: approx. 444 mm

C

Anodised aluminium profile; power input: GST18i3 plug, power output: GST18i3 socket

- 909.0026 |
- 4 x UK 3.15 A individually fused, shuttered, black, set at 45°



8-way: 8 x custom module

Length: approx. 444 mm

C

Anodised aluminium profile; without power connection

- 909.001 |
- without socket outlets



CONFERENCE guide rail set

Part no. | Version

CONFERENCE guide rail set

Black

For power strips (pages 10-11)

- 940.099 |
- Guide rail, plastic, black
 - Incl. 2 countersunk head screws 2.9 x 13 mm with Torx to DIN 7982





CONI

Integrated functionality

CONI brings flexibility to the desktop, for example in conference and training rooms. CONI facilitates unrestricted individual access to power, media and data right on the tabletop or desktop. Minimal installation depth means there is no reduction in leg room under the desk or table, even where the units are fitted near the edge.

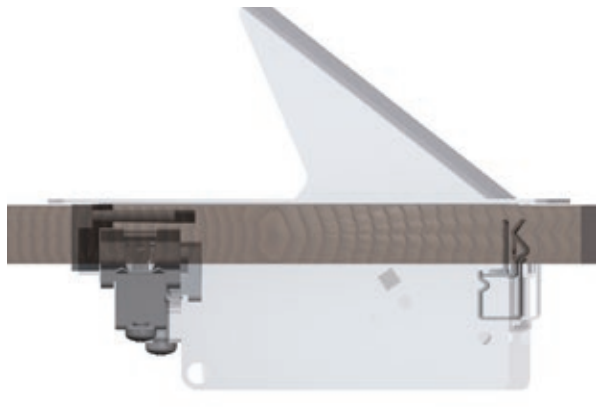
Benefits at a glance

- Integrated into your desktop or tabletop
- Minimum built-in depth, robust frame design
- Integrated brush insert for closing once cables have been plugged in
- Configuration can be freely selected (see custom modules from page 48)
- Complete power strip can be quickly interchanged
- Suitable for retrofitting
- Wide range of standard surface finishes

When not in use, CONI integrates into the surface of the desk or table. When you need power, data or media, simply open the cover, plug into a socket and close the cover again. The integrated brush insert prevents the cables from jamming. The harmonious appearance of an „even“ table is retained. Configuration of CONI data connections can be freely selected (see custom modules from page 48). Power strips can also be interchanged quickly, and at any time, without the need for tools. Integrated functionality and flexibility not just for today but also for the advances of tomorrow.



CONI provides unrestricted access to power, media and data supplies. Thanks to the integrated brush insert, the cover can be closed once devices have been connected without jamming the cables.



Installed with ease

The built-in frame is very easy to install - only standard tools are required. Simply make a cut-out in the top of your desk or table. Then just tighten the four fixing claws tighten with a screwdriver and secure the built-in frame within the desk or table.

CONI built-in frame, short and long version

Built-in depth is 56 mm, suitable for desktop or tabletop thicknesses of 10 mm and above. They have an R5 corner radius, which enables them to be flush-mounted in desks or tables.

The black brush strips can easily be replaced with colour strips; no tools are required. Simply remove the built-in frame from the top of the desk or table and unscrew the three re-usable plastic rivets.

**CONI built-in frame short**

Outer dimensions:
approx. 248 x 151 mm

CONI built-in frame long

Outer dimensions:
approx. 386.5 x 151 mm

Part no. | Version

CONI, short**Silver grey, similar to RAL9006**

338.0203 | · Dimensions approx. 248 x 151 mm

CONI, long**Silver grey, similar to RAL9006**

338.0205 | · Dimensions approx. 386.5 x 151 mm

CONI, short**Anthracite, similar to RAL7016**

338.0204 | · Dimensions approx. 248 x 151 mm

CONI, long**Anthracite, similar to RAL7016**

338.0206 | · Dimensions approx. 386.5 x 151 mm

CONI, short**Chrome look**

338.0214 | · Dimensions approx. 248 x 151 mm

CONI, long**Chrome look**

338.0227 | · Dimensions approx. 386.5 x 151 mm

CONI, short**White, similar to RAL9010**

911.000 | · Dimensions approx. 248 x 151 mm

CONI, long**White, similar to RAL9010**

911.001 | · Dimensions approx. 386.5 x 151 mm

CONI, short**Black, similar to RAL9005**

911.002 | · Dimensions approx. 248 x 151 mm

CONI, long**Black, similar to RAL9005**

911.003 | · Dimensions approx. 386.5 x 151 mm

CONI, short**Ground stainless steel**

911.004 | · Dimensions approx. 248 x 151 mm

CONI, long**Ground stainless steel**

911.005 | · Dimensions approx. 386.5 x 151 mm

CONI bracket

- For mounting CONI power strips without using a built-in frame. Can, for example, be installed under a desktop or table-top in a cable tray. Standard chipboard screws (which can be purchased from all good retailers) are required for mounting.
- Takes account of the rear-side outlet and bending radii of power and data connections.

Part no. | Version

CONI bracket, tall

918.002	<ul style="list-style-type: none"> · Black · 2 items in plastic bag · Distance between floor and socket outlet profile: 30 mm · Distance between floor and top edge of multiple-socket outlet: 74 mm
---------	--



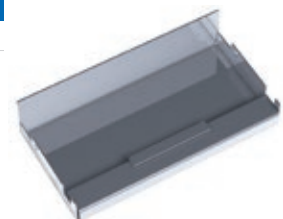
CONI holder

- For optional mounting on CONI built-in frame (short and long version)
- Allows excess lengths of cable to be stowed when plugged in
- Easy to fit by hooking into built-in frame (already fitted), using plastic rivets supplied
- Small extra built-in depth of approx. 20 mm in addition to depth of built-in frame

Part no. | Version

CONI holder

911.910	· Version for CONI built-in frame, short
911.913	· Version for CONI built-in frame, long



CONI brushes

Part no. | Version

CONI brush strip, short

911.900	· Red
911.901	· Blue
911.903	· Yellow
911.904	· Black

CONI brush strip, long

911.905	· Red
911.906	· Blue
911.907	· White
911.908	· Yellow
911.909	· Black





CONI DUO

Twin Pack

CONI DUO provides simple and unimpeded access to power, media and data connections on the table or desk from two sides. There is no reduction in leg room under the desk or table.

When not in use, CONI DUO integrates fully into the surface of the desk or table. When you need power, data or media, simply open one of the two covers, plug into the desired socket and close the cover again. The brush insert prevents the cables from jamming. The harmonious appearance of an "even" table is retained. Configuration of CONI DUO data connections can be freely selected (see custom modules from page 48). Integrated functionality and maximum flexibility not just for today but also for the advances of tomorrow.

Benefits at a glance

- Ideal for narrow conference and training desks and tables
- Access from 2 opposite sides
- Just one desk or table cut-out needed
- Integrated into your desktop or tabletop
- Minimum built-in depth, robust frame design
- Integrated brush insert so lid can be closed when cables are plugged-in
- Power strips can be quickly interchanged without the need for tools

CONI DUO, short and long version

The name says it all:
CONI twin pack.
Designed especially for use with
small meeting tables, which have
power and data connections on
opposite sides.



CONI DUO built-in frame short
6-way: 2 x 3-way
Outer dimensions: approx.:
505 x 151 mm

CONI DUO built-in frame long
12-way: 2 x 6-way
Outer dimensions: approx.:
782 x 151 mm

Part no. | Version

CONI DUO Silver grey, similar to RAL9006

6-way, short	
911.026	· Dimensions approx. 505 x 151 mm
12-way, long	
911.025	· Dimensions approx. 782 x 151 mm



CONI DUO White, similar to RAL9010

6-way, short	
911.028	· Dimensions approx. 505 x 151 mm
12-way, long	
911.029	· Dimensions approx. 782 x 151 mm





Preassembled plug and play solutions

Part no. | Version

3-way: custom modules + power socket outlet**Length: approx. 217 mm**

Anodised aluminium profile; power input: 0.2 m cable and GST18i3 plug

- 912.1657
- 1 x UK 3.15 A individually fused, shuttered, black, set at 90°
 - 1 x Keystone module CAT6 RJ45 coupling socket/ socket
 - 1 x Keystone module HDMI socket/ socket
 - 1 x Custom module 1 x VGA socket and 3.5 mm stereo miniature jack with approx. 0.1 m cable

U**3-way: 1 x USB double charger (5.2V/ 2.15A) + custom module + power socket outlet****Length: approx. 217 mm**

Anodised aluminium profile; power input: 0.2 m cable and GST18i3 plug

- 912.1658
- 1 x UK 3.15 A individually fused, shuttered, black, set at 90°
 - 1 x USB double charger (5.2 V / 2.15 A)
 - 2 x Keystone module CAT6 RJ45 coupling socket/ socket

6-way: custom modules + power socket outlet**Length: approx. 356 mm**

Anodised aluminium profile; power input: 0.2 m cable and GST18i3 plug

- 912.1659
- 3 x UK 3.15 A individually fused, shuttered, black, set at 90°
 - 2 x Keystone module CAT6 RJ45 coupling socket/ socket
 - 1 x Keystone module USB 3.0 A/A (straight through)
 - 1 x Keystone module HDMI socket/ socket
 - 1 x Custom module 1 x VGA socket and 3.5 mm stereo miniature jack with approx. 0.1 m cable

U**6-way: 1 x USB double charger (5.2V/ 2.15A) + custom modules + power socket outlets****L: approx. 356 mm**

Anodised aluminium profile; power input: 0.2 m cable and GST18i3 plug

- 912.1702
- 2 x UK 3.15 A individually fused, shuttered, black, set at 90°
 - 1 x USB double charger (5.2 V / 2.15 A)
 - 2 x Keystone module CAT6 RJ45 coupling socket/ socket
 - 1 x Keystone module USB 3.0 A/A (straight through)
 - 1 x Keystone module HDMI socket/ socket
 - 1 x Custom module 1 x VGA socket and 3.5 mm stereo miniature jack with approx. 0.1 m cable

Ready to customise: Power strips 3-way

Power cables and custom modules are available separately.

Part no. | Version

C**3-way: 2 x custom module + power socket outlet****Length: approx. 217 mm**

Anodised aluminium profile; power input: 0.1 m cable and GST18i3 plug

- 912.0080
- 1 x UK 3.15A individually fused, shuttered, black, set at 90°

C**3-way: 1 x custom module + power socket outlets****Length: approx. 217 mm**

Anodised aluminium profile; power input: 0.1 m cable and GST18i3 plug

- 912.045
- 2 x UK 3.15A individually fused, shuttered, black, set at 90°

C**3-way: 3 x custom module****Length: approx. 217 mm**

Anodised aluminium profile; without power connection

- 912.000
- without socket outlets

Part no. | Version

U C**3-way: 1 x USB double charger (5.2V/ 2.15A) + custom module + power socket outlet****Length: approx. 217 mm**

Anodised aluminium profile; power input: 0.2 m cable and GST18i3 plug

- 912.1781
- 1 x UK 3.15 A individually fused, shuttered, black, set at 90°
 - 1 x USB double charger (5.2 V / 2.15 A)

Ready to customise: power strips 6-way

Power cables and custom modules are available separately.

Part no. | Version

6-way: 3 x custom module + power socket outlet Length: approx. 356 mm **C**

Anodised aluminium profile; power input: 0.2 m cable and GST18i3 plug
 912.022 | · 3 x UK 3.15 A individually fused, shuttered, black, set at 90°

6-way: 2 x custom module + power socket outlet Length: approx. 356 mm **C**

Anodised aluminium profile; power input: 0.2 m cable and GST18i3 plug
 912.0221 | · 4 x UK 3.15 A individually fused, shuttered, black, set at 90°

6-way: 1 x custom module + power socket outlet Length: approx. 356 mm **C**

Anodised aluminium profile; power input: 0.2 m cable and GST18i3 plug
 912.021 | · 4 x UK 3.15 A individually fused, shuttered, black, set at 90°

6-way: 6 x custom module Length: approx. 356 mm **C**

Anodised aluminium profile; without power connection
 912.001 | · without socket outlets

6-way: 1 x USB double charger (5.2 V/2.15 A) + custom modules + power socket outlets Length: approx. 356 mm **C U**

Anodised aluminium profile; power input: 0.2 m cable and GST18i3 plug
 912.0280 | · 2 x UK 3.15 A individually fused, shuttered, black, set at 90°
 | · 1 x USB double charger, 3 x custom module





CONI COVER

Easy access

CONI COVER is an elegant way of accessing separate power supply units or standard cable installation systems under the tops of desks and tables.

To access the connections under the desktop or tabletop, the cover of the CONI COVER simply has to be opened. Thanks to the integrated brush insert, the cover can even be closed again with devices connected. The harmonious appearance of an "even" table is retained.

CONI COVER, the refined cover for practical solutions - access couldn't be easier!

Benefits at a glance

- Ideal for desks and tables with built-in cable ducts
- Compatible with all makes of duct and furniture
- Ideal for retrofitting
- Integrated brush insert for closing lid even when cables are connected
- flush-mounted in desks or tables

Both short and long versions of CONI COVER built-in frames are available. The built-in depth of 24 mm is suitable for a minimum desktop or tabletop thickness of 16 mm. Frame is fixed to the tabletop with four screws. These are screwed on, from the inside, through corresponding holes on the long sides of the built-in frame. Fitting instructions and cut-out dimensions are supplied with the unit.

CONI COVER built-in frame short

Outer dimensions: 248 x 149 mm

CONI COVER built-in frame long

Outer dimensions: 387 x 149 mm

Part no. | Version

CONI COVER, short**Silver grey, similar to RAL9006**

338.0081 | · Dimensions approx. 248 x 149 mm

CONI COVER, long**Silver grey, similar to RAL9006**

338.0080 | · Dimensions approx. 387 x 149 mm

CONI COVER, short**White, similar to RAL9010**

911.500 | · Dimensions approx. 248 x 149 mm

CONI COVER, long**White, similar to RAL9010**

911.501 | · Dimensions approx. 387 x 149 mm

CONI COVER, short**Black, similar to RAL9005**

911.502 | · Dimensions approx. 248 x 149 mm

CONI COVER, long**Black, similar to RAL9005**

911.503 | · Dimensions approx. 387 x 149 mm



CONI COVER and STEP. The expandable combination.

The modular design of the STEP power strips puts everything you need for your specific, customised supply of power and data at your fingertips. CONI COVER with its integrated brush insert provides access that is both fast and elegant.



Easy access to all power supply units located under the tabletop or desktop - for example to modular STEP power strips.

You will find STEP multiple-socket outlets on page 44



CONEO

Integrated Functionality

CONEO – the quick and easy solution for the smart integration of power- and data connections into your desk or table top.

Benefit from the flexibility that Bachmann modules provide by combining the PDU with both power and a selection from our comprehensive range of custom modules.

Integrated functionality not just for today but also provides flexibility to satisfy the advancements and demands of the future.

Benefits at a glance

- easily secured using durable double sided tape
- consists of frame and power / data distribution unit
- custom modules provide high flexibility
- minimum built-in depth for maximum legroom
- flap can be closed with cables connected
- integrated into the table top
- ideal for retrofitting



Preassembled plug and play solution

Part. no. | Version

CONEO mounting frame silver-grey with 3-way power strip: 1 x USB double charger (5.2V/ 2.15A) + custom module + power socket outlet

U

Anodised aluminium profile; power input: 0.2 m cable and GST18i3 plug

- | | |
|---------|---|
| 900.412 | <ul style="list-style-type: none"> · 1 x UK 3.15A individually fused, shuttered, black, set at 45°, length approx. 229 mm · 1 x USB double charger (5.2 V/ 2.15 A) · 2 x Keystone module CAT6 RJ45 coupling socket/ socket |
|---------|---|



Ready to customise

Part. no. | Version

CONEO mounting frame silver-grey with 3-way power strip: 1 x custom module + power socket outlet

C

Anodised aluminium profile; power input: 0.2 m cable and GST18i3 plug

- | | |
|---------|--|
| 900.405 | <ul style="list-style-type: none"> · 2 x UK 3.15A individually fused, shuttered, black, set at 45°, length approx. 229 mm |
|---------|--|



CONEO mounting frame silver-grey with 3-way power strip: 1 x USB double charger (5.2V/ 2.15A) + 1 x custom module + power socket outlet

C

U

Anodised aluminium profile; power input: 0.2 m cable and GST18i3 plug

- | | |
|---------|--|
| 900.410 | <ul style="list-style-type: none"> · 1 x UK 3.15A individually fused, shuttered, black, set at 45°, length approx. 229 mm |
|---------|--|





POWER FRAME COVER

Who'd have thought power could be so elegant?

POWER FRAME COVER is the elegant and compact power and data supply solution. The POWER FRAME COVER has an attractive aluminium cover, designed especially for conference and office environments with a strong design element, which also protects power and data connections from dust and dirt. When the cover is fully open, both sides of the table or desk offer unimpeded access.

Benefits at a glance

- Design piece made from anodised aluminium
- For conference tables and desks
- Access to power supply and data from any seat
- Dust protection
- Versatile: can be combined with socket outlets and data/audio/video modules

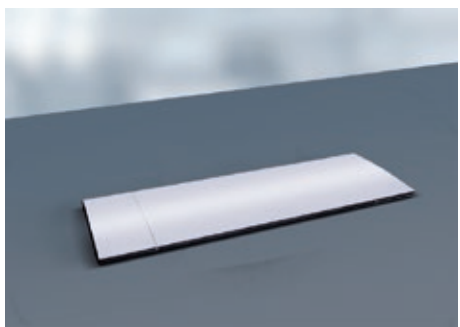
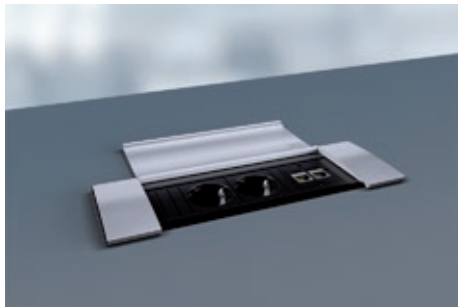
POWER FRAME COVER

Part no.	Version	
POWER FRAME COVER 3-way		Dimensions approx. 255 x 87 x 8 mm
3-way black Power Frame (part. 915.000), with aluminium flap, for gluing into desk or table		
915.500	· Aluminium	
915.503	· Aluminium, painted in white similar to RAL9010	
915.501	· Aluminium, painted in stainless steel	
915.022	· Aluminium, black anodised E1/C35 and brushed	
POWER FRAME COVER 4-way		Dimensions approx. 298 x 87 x 8 mm
4-way black Power Frame (part no. 915.004), with aluminium flap, for gluing into desk or table		
915.502	· Aluminium	
POWER FRAME COVER 6-way		Dimensions approx. 382 x 87 x 8 mm
6-way black Power Frame (art. 915.006), with aluminium flap, for gluing into desk or table		
915.504	· Aluminium	



! Only power strips with evenly flush custom modules can be used in conjunction with the POWER FRAME COVER.

! You will find suitable power strips on pages 28 and 29





POWER FRAME

Compact and efficient

POWER FRAME is an easily accessible unit for supplying electricity to workstations. The power strip clicks into the built-in frame and can be interchanged or fitted with custom modules as required.



Benefits at a glance

- Compact dimensions
- Suitable for retrofitting
- Timeless design
- Versatile to use
- Rapid installation of complete power strips

POWER FRAME is the compact solution for integrated and easily accessible power and data connections for workstations.

They can be either factory fitted or supplied for retrofitting.

Combining compact dimensions with high-quality timeless design, POWER FRAME opens up virtually unlimited application options that go far beyond the realm of office workstations. Such as in sales showrooms and display windows and at trade fair and demonstration stands.

In short, wherever secure and rapid connections are the order of the day.

Your chosen power strip simply plugs into the built-in frame from below without tools - a stroke of perfection.

POWER FRAME, for a more compact and more efficient solution.



POWER FRAME is the solution for easy-to-access power and data connections at workstations and elsewhere. The power strip simply clicks into the built-in frame from below.

Built-in frame

Part no. | Version

POWER FRAME 3-way built-in frame**Dimensions: approx. 241 x 73 mm**

317.000	· Silver-grey similar to RAL9006
317.001	· Stainless steel
915.000	· Black similar to RAL9005
915.001	· White similar to RAL9010

POWER FRAME 4-way built-in frame**Dimensions: approx. 283.5 x 73 mm**

317.006	Silver grey similar to RAL9006
915.004	Black similar to RAL9005
915.005	White similar to RAL9010

POWER FRAME 6-way built-in frame**Dimensions: approx. 368.5 x 73 mm**

317.007	Silver-grey similar to RAL9006
915.006	Black similar to RAL9005
915.003	White similar to RAL9010



POWER FRAME Power strips

Preassembled plug and play solutions

Part no. | Version

3-way: custom modules + power socket outlet**Length: approx. 220 mm**

Anodised aluminium profile; power input: 0.2 m cable and GST18i3 plug

916.1233	· 2 x UK 3.15 A individually fused, shuttered, black, set at 90° · 2 x Keystone module CAT6 RJ45 coupling socket / socket
----------	--

U**3-way: 1 x USB double charger (5.2V/ 2.15A) + custom module + power socket outlet****Length: approx. 220 mm**

Anodised aluminium profile; power input: 0.2 m cable and GST18i3 plug

916.1234	· 1 x UK 3.15 A individually fused, shuttered, black, set at 90° · 1 x USB double charger (5.2 V / 2.15 A) · 2 x Keystone module CAT6 RJ45 coupling socket/ socket
----------	--

6-way: custom modules + power socket outlet**Length: approx. 350 mm**

Anodised aluminium profile; power input: 0.2 m cable and GST18i3 plug

916.1235	· 3 x UK 3.15 A individually fused, shuttered, black, set at 90° · 2 x Keystone module CAT6 RJ45 coupling socket/ socket · 1 x Keystone module USB 3.0 A/A (straight through) · 1 x Keystone module HDMI socket/ socket · 1 x Custom module 1 x VGA socket and 3.5 mm stereo miniature jack with approx. 0.1 m cable
----------	--

U**6-way: 1 x USB double charger (5.2V/ 2.15A) + custom modules + power socket outlet****Length: approx. 350 mm**

Anodised aluminium profile; power input: 0.2 m cable and GST18i3 plug

916.1237	· 2 x UK 3.15 A individually fused, shuttered, black, set at 90° · 1 x USB double charger (5.2 V / 2.15 A) · 2 x Keystone module CAT6 RJ45 coupling socket / socket · 1 x Keystone module USB 3.0 A/A (straight through) · 1 x Keystone module HDMI socket /socket · 1 x Custom module 1 x VGA socket and 3.5 mm stereo miniature jack with approx. 0.1 m cable
----------	--

Ready to customise: Power strips 3-way

Part no. | Version

3-way: 2 x custom module + power socket outlets Length: approx. 220 mm

Anodised aluminium profile; power input: 0.2 m cable and GST18i3 plug

916.091 | · 1 x UK 3.15A individually fused, shuttered, black, set at 90°

3-way: 1 x custom module + power socket outlets Length: approx. 220 mm

Anodised aluminium profile; power input: 0.2 m cable and GST18i3 plug

916.082 | · 2 x UK 3.15A individually fused, shuttered, black, set at 90°

3-way: Power socket outlets Length: approx. 220 mm

Anodised aluminium profile; power input: 0.2 m cable and GST18i3 plug

916.1129 | · 3 x UK 3.15A individually fused, shuttered, black, set at 90°

3-way: 3 x custom module Length: approx. 220 mm

Anodised aluminium profile; without power connection

916.010 | · Without socket outlets

3-way: 1 x USB double charger (5.2 V/2.15 A) + 1 x custom module + power socket outlets L: approx. 220 mm

Anodised aluminium profile; power input: 0.2 m cable and GST18i3 plug

916.0510 | · 1 x UK 3.15A individually fused, shuttered, black, set at 90°



Ready to customise: Power strips 4-way

Part no. | Version

4-way: 2 x custom module + power socket outlets Length: approx. 261.9 mm

Anodised aluminium profile; power input: 0.2 m cable and GST18i3 plug

916.0821 | · 2 x UK 3.15 A individually fused, shuttered, black, set at 90°

4-way: 1 x USB double charger (5.2V/ 2.15 A) + 1 x custom module + power socket outlet L.: approx. 261.9 mm

Anodised aluminium profile; power input: 0.2 m cable and GST18i3 plug

916.0519 | · 2 x UK 3.15 A individually fused, shuttered, black, set at 90°

4-way: 1 x USB double charger (5.2V/ 2.15 A) + 2 x custom module + power socket outlets L.: approx. 261.9 mm

Anodised aluminium profile; power input: 0.2 m cable and GST18i3 plug

916.0516 | · 1 x UK 3.15 A individually fused, shuttered, black, set at 90°

4-way: 1 x USB double charger (5.2V/ 2.15 A) + power socket outlets L.: approx. 261.9 mm

Anodised aluminium profile; power input: 0.2 m cable and GST18i3 plug

916.1229 | · 3 x UK 3.15 A individually fused, shuttered, black, set at 90°



Ready to customise: Power strips 6-way

Part no. | Version

6-way: 2 x custom module + power socket outlets L: approx. 350 mm

Anodised aluminium profile; power input: 0.2 m cable and GST18i3 plug

916.0361 | · 3 x UK 3.15A individually fused, shuttered, black, set at 90°

6-way: 3 x custom module + power socket outlets L: approx. 350 mm

Anodised aluminium profile; power input: 0.2 m cable and GST18i3 plug

916.086 | · 3 x UK 3.15A individually fused, shuttered, black, set at 90°

6-way: 1 x USB double charger (5.2V/ 2.15A) + 3 x custom modules + power socket outlet L.: approx. 350 mm

Anodised aluminium profile; power input: 0.2 m cable and GST18i3 plug

916.0075 | · 2 x UK 3.15 A individually fused, shuttered, black, set at 90°





DUE

Form and function in a duet

DUE is the ideal power strip for the kitchen. It guarantees an elegant power connection and can be used just as effectively in the office as in other areas. With its interchangeable covers, it can be colour-coordinated to its surroundings or create accents as desired, even after installation.

The split cover allows DUE to be slid open as required, with a design that looks equally elegant when in use. The low installation depth of less than 45 mm allows it to be compactly integrated into kitchen worktops and desks or installed above drawers.

DUE is also perfect in form and function when wall-mounted.

Benefits at a glance

- "Customise your product" – interchangeable covers available in black, white and stainless steel look
- Low installation depth (less than 45 mm)
- Space-saving even when open
- Supplied with mounting template
- Integrated water run-off

DUE power strips

Part no. | Version

DUE 2 x UK	
Housing, black plastic; power input 2.0 m cable with mounted mounting plug, black	
929.004	· UK socket outlets, shuttered, black, set at 90°



! Housing only, covers must be ordered separately

DUE cover

Part no. | Version

DUE cover, stainless steel look	
929.100	· Made from plastic, stainless steel look finish
	· Contents: 2 x covers



DUE cover, black	
929.101	· Made from plastic, colour black, similar to RAL9005
	· Contents: 2 x covers

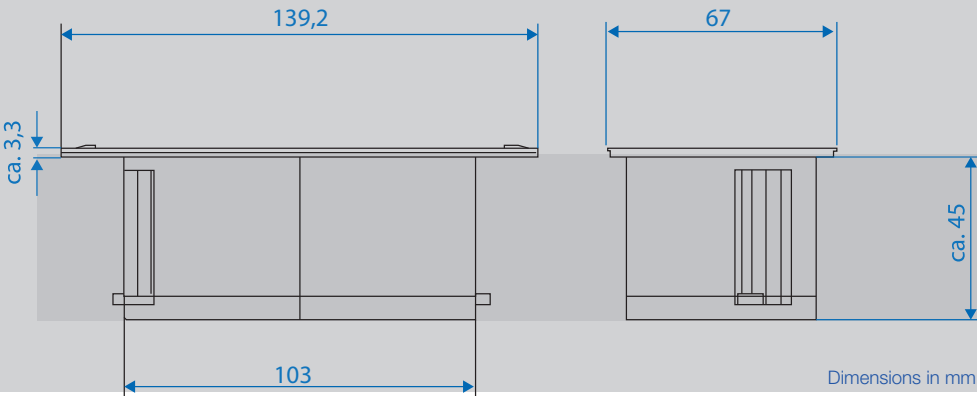


DUE cover, white	
929.102	· Made from plastic, colour white, similar to RAL9010
	· Contents: 2 x covers



DUE power strip

The low installation depth of approximately 45 mm allows it to be compactly integrated into kitchen worktops or installed above drawers.





PIX

Design exactly where you need it

The stylish PIX range is a collection of sophisticated, round socket outlet and connector units that can be used in many different ways. On a desk in the office, in the kitchen, in the bathroom, as a lounge element, in the wall or other living room scenarios, PIX provides a huge range of customisable connections.

Used alone or in combination, the decorative rings are available in various colours and can be interchanged. An ingenious, swivel-mounted cover, providing protection from dust and dirt, is available as an option for PIX and can also be retrofitted. The compact form (H x Ø: approx. 50 x 68 mm) and low installation depth (approx. 45 mm) ensure a space-saving installation from above or the front. Retrofitting is also possible.

With its round, flat shape and minimalist appearance, the PIX meets design requirements exactly where you need it.

Benefits at a glance

- Customisable range of connections
- Can be integrated on its own or in combination
- Interchangeable, coloured decorative rings
- With swivel-mounted cover as an option
- Low installation depth (approx. 45 mm)
- Simple mounting from above, retrofitting possible too

PIX power strips

Part no.	Version
PIX 1 x UK	
Housing, black plastic; power input 0.2 m cable with GST18i3, black	
926.006	<ul style="list-style-type: none">· 1 x UK 3.15 A socket outlet, shuttered, black· Mounted decorative ring, black, similar to RAL9005· With decorative ring included, white, similar to RAL9010
PIX 1 x custom module	
Housing, black plastic	
926.010	<ul style="list-style-type: none">· 1 x custom module without supply cable



PIX cover set

Part no.	Version
PIX cover set, black	
926.101	<ul style="list-style-type: none">· Swivelling cover with accompanying decorative ring, black, similar to RAL9005· Includes panels for respective country and connection versions
PIX cover set, white	
926.102	<ul style="list-style-type: none">· Swivelling cover with accompanying decorative ring, white, similar to RAL9010· Includes panels for respective country and connection versions



! Other colour versions available on request



PIX with swivel-mounted cover



ELEVATOR

The elevator is powered straight away

ELEVATOR fits perfectly in any working environment. At 79 mm in diameter, ELEVATOR is ideal for integrating power and data connections in tiny spaces. Simply press down with your finger to raise and lower ELEVATOR. Installation is incredibly simple. ELEVATOR is placed in a cut-out 79 mm in diameter and secured to the desktop or tabletop from below using a lock ring.

Benefits at a glance

- Press down with your finger to raise
- Suitable for standard 79 mm hole
- Quick and easy to install
- Suitable for retrofitting
- Classic design
- For desktop or tabletop thicknesses of 16 – 60 mm

ELEVATOR

Part no.	Version
ELEVATOR power strip	
Aluminium profile, matt chrome, power input: 0.5 m H05VV-F3G 1.5 mm² with GST18 plug; 3.0 m data cables and plug and/or socket	
928.026	<ul style="list-style-type: none">· 1 x UK 5 A individually fused, shuttered, black, set at 90°· 1 x USB double charger (5.2 V/ 2.15 A)
928.039	<ul style="list-style-type: none">· 1 x UK 3.15 A individually fused, shuttered, black, set at 90°· 1 x CAT6 RJ45 with 3.0 m data cable and RJ45 plug· 1 x USB 3.0 A socket with 3.0 m data cable and USB 3.0 A plug
928.040	<ul style="list-style-type: none">· 1 x UK 3.15 A individually fused, shuttered, black, set at 90°· 2 x CAT6 RJ45 with 3.0 m data cable and RJ45 plug

U

Accessories

Part no.	Version
Hole saw diameter 79 mm for installing the ELEVATOR	
928.900	<ul style="list-style-type: none">· In wood/plastic; cutting depth up to 44 mm
918.900	<ul style="list-style-type: none">· Mounting tool for hole saw with centring drill



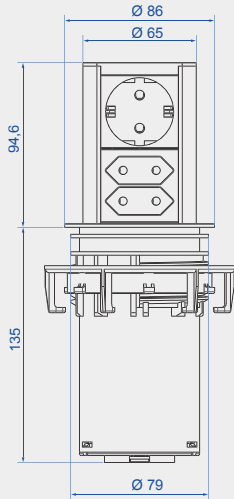
Similar to illustration



Similar to illustration



Watch the ELEVATOR installation film
at bachmann.com



Dimensions in mm

ELEVATOR fits in cut-outs 79 mm in diameter

100 mm high, 79 mm in diameter: With 3 socket outlets, ELEVATOR is a tiny yet impressive powerhouse. Simply press down with your thumb to open ELEVATOR. It is simply lowered again after use.





LIFT

High-tech in motion

LIFT is the totally practical combination of sophisticated looks and high-precision mechanical design. The unit is recessed neatly in the top of the desk or table when not in use. Simply touch to raise out of the desk or table and it's ready for docking on all four sides. Once you have finished using the connections, simply push it back into its initial recessed position by hand.

Benefits at a glance

- Simply touch to raise
- Design that can't fail to impress
- Access points on four sides
- Incredibly compact dimensions
- Low built-in depth
- 4 plug-in units on one height unit

LIFT can be supplied in a variety of power and data connection configurations. This highly compact unit needs a drill hole only 140 mm in diameter for installation. Built-in depth both open and closed is just 195 mm.

By setting cutting-edge technology in motion, LIFT makes power and data supply a truly enjoyable experience.

Black Body

Part no.	Version
LIFT: Power socket outlets	
Enclosure colour black; power input: 0.5 m cable and GST18i3 plug	
904.020	· 4 x UK 3.15 A individually fused, shuttered, black, set at 90°
LIFT: 2 x CAT6 + power socket outlets	
Enclosure colour black; power input: 3.0 m cable and plug; 3.0 m data cable and RJ45 plug	
904.021	· 3 x UK 3.15 A individually fused, shuttered, black, set at 90°
LIFT: 2 x CAT6, 1 x VGA + miniature jack + power socket outlets	
Enclosure colour black; power input: 3.0 m cable and plug; CAT6 3.0 m data cable and RJ45 plug; VGA 15-pole and miniature jack with 3.0 m cable and plug	
904.022	· 2 x UK 3.15 A individually fused, shuttered, black, set at 90°
LIFT: 2 x CAT6, 2 x USB + power socket outlets	
Enclosure colour black; power input: 3.0 m cable and plug; CAT6 3.0 m data cable and RJ45 plug; USB A socket with 3.0 m cable and plug	
904.023	· 2 x UK 3.15 A individually fused, shuttered, black, set at 90°
Hole saw Ø 140 mm	
For Lift installation	
904.900	· Hole saw for clamping, with centre drill · 140 mm diameter
Mounting tool for hole saw	
918.900	· with centre drill



Similar to illustration



Similar to illustration





reddot design award
winner 2011

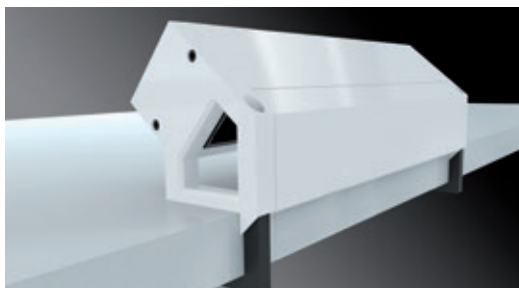


DESK 2

Design meets technology

DESK 2 is a multiple-socket outlet that can be populated with various communication modules. It has been designed for flexible use in the office, meeting rooms, home offices or desk sharing environments.

The outlet is made from aluminium and is available in various colours. The connections are screwed onto the standardised module windows and can be changed over easily.



DESK 2 is secured to the desktop with aluminium mounting brackets, and cables are routed behind the screen.

Benefits at a glance

- Design solution for modern workstations
- User-focused 35° orientation
- Covered wiring to the edge of a desk or table
- Custom versions adapt to future requirements



Preassembled plug & play solutions

Part no. | Version

1 x custom module + power socket outlets Length: approx. 239 mmAluminium profile; power input: 0.2 m H05VV-F3G 1.5 mm² with GST18; including mounting bracket

- | | |
|---------|---|
| 902.365 | <ul style="list-style-type: none"> • 2 x UK 3.15 A individually fused, shuttered, black, set at 45° • 2 x Keystone module CAT6 RJ45 coupling socket/ socket • Painted in white, similar to RAL9010 |
|---------|---|

**1 x custom module + power socket outlets** Length: approx. 239 mmAluminium profile; power input: 0.2 m H05VV-F3G 1.5 mm² with GST18; including mounting bracket

- | | |
|---------|---|
| 902.576 | <ul style="list-style-type: none"> • 2 x UK 3.15 A individually fused, shuttered, black, set at 45° • 2 x Keystone module CAT6 RJ45 coupling socket/ socket • Painted in stainless steel |
|---------|---|

**1 x USB double charger, 1 x custom module + power socket outlets** Length: approx. 284.2 mm **U**Aluminium profile; power input: 0.2 m H05VV-F3G 1.5 mm² with GST18; including mounting bracket

- | | |
|---------|--|
| 902.366 | <ul style="list-style-type: none"> • 2 x UK 3.15 A individually fused, shuttered, black, set at 45° • 1 x USB double charger (5.2 V / 2.15 A) • 2 x Keystone module CAT6 RJ45 coupling socket/ socket • Painted in white, similar to RAL9010 |
|---------|--|

**1 x USB double charger, 1 x custom module + power socket outl** Length: approx. 284.2 mm **U**Aluminium profile; power input: 0.2 m H05VV-F3G 1.5 mm² with GST18; including mounting bracket

- | | |
|---------|--|
| 902.577 | <ul style="list-style-type: none"> • 2 x UK 3.15 A individually fused, shuttered, black, set at 45° • 1 x USB double charger (5.2 V / 2.15 A) • 2 x Keystone module CAT6 RJ45 coupling socket/ socket • Painted in stainless steel |
|---------|--|



Ready to customise

Part no. | Version

1 x custom module + power socket outlets Length: approx. 239 mm **C**Aluminium profile; power input: 0.2 m H05VV-F3G 1.5 mm² with GST18; including mounting bracket

- | | |
|---------|--|
| 902.206 | <ul style="list-style-type: none"> • 2 x UK 3.15 A individually fused, shuttered, black, set at 45° • Painted in white, similar to RAL9010 |
|---------|--|

**2 x custom module + power socket outlets** Length: approx. 274 mm **C**Aluminium profile; power input: 0.2 m H05VV-F3G 1.5 mm² with GST18; including mounting bracket

- | | |
|---------|--|
| 902.406 | <ul style="list-style-type: none"> • 2 x UK 3.15 A individually fused, shuttered, black, set at 45° • Painted in stainless steel |
|---------|--|

**DESK 2 with 1 x USB double charger (5.2 V/2.15 A), 1 x custom module + power socket outlets** **C U**Aluminium profile; power input 0.2 m H05VV-F3G 1.5mm² with GST 18; including mounting bracket

- | | |
|---------|---|
| 902.231 | <ul style="list-style-type: none"> • 2 x UK 3.15 A individually fused, shuttered, black, set at 45° • Length 284.2 mm • Painted in white, similar to RAL9010 |
|---------|---|

**DESK 2 with 1 x USB double charger (5.2 V/2.15 A), 1 x custom module + power socket outlets** **C U**Aluminium profile; power input 0.2 m H05VV-F3G 1.5mm² with GST 18; including mounting bracket

- | | |
|---------|---|
| 902.431 | <ul style="list-style-type: none"> • 2 x UK 3.15 A individually fused, shuttered, black, set at 45° • Length 284.2 mm • Painted in stainless steel |
|---------|---|



! DESK 2 brackets are suitable for desktop or tabletop thicknesses of 10 mm to 40 mm. Alternatively, DESK 1 standard brackets (part no. 930.120) can also be used for DESK 2, these cover a range of 25 mm to 55 mm.



DESK 1

Versatility with style

DESK is the ideal solution for data, media and power management wherever workstations need to be flexible.

Typical situations might include meeting rooms, home offices or desk sharing environments.

Benefits at a glance

- Flexibility of use regardless of location
- Free choice of either the flexible Wieland connector system or permanent connections
- Fixed or free-standing on desk/table
- Custom versions adapt to future requirements

DESK 1 - every possibility at your fingertips



Damage free mounting

DESK 1 can be mounted on the edge of a desk or table quickly and easily using a mounting bracket. A size 4 Allen key is required in order to tighten the inside screw on the bracket. Mounting does not damage the tabletop/desktop.

Plug connections as standard

The standard power connection features a Wieland plug-in connector in the rear panel and provides both reliable power feed and also flexibility in cable length. The cables can be swapped for longer or shorter power supply cables, for example. We use Wieland's GST18 plug-in connector, which is popular all over the world, as standard.

DESK 1 plus STEP in combination

Combining DESK 1 with a STEP power strips provides the ideal overall solution for an individual office workstation.

DESK 1 provides easy access to power and data connections for various devices (laptop, mobile phone, USB etc.) whilst the STEP power strip under the desktop/tabletop supplies power to fixed devices such as PC, monitor, printer etc. The STEP power strip is screwed in place underneath the top of the desk or table or placed in a duct underneath. The integrated Wieland connector system allows multiple power strips to be connected in series in compliance with standards.





Preassembled plug and play solutions

Max. 16A/230V~

Part no. | Version

1 x custom module + power socket outlets

Length: approx. 276 mm

Anodised aluminium profile; power input: GST18/ power output: GST18

- 902.1074 | · 2 x UK 3.15 A individually fused, shuttered, black, set at 45°
· 2 x Keystone module CAT6 RJ45 coupling socket/ socket

U**1 x USB double charger, 1 x custom module + power socket outlets**

Length: approx. 316.3 mm

Anodised aluminium profile; power input: GST18/ power output: GST18

- 902.1169 | · 2 x UK 3.15 A individually fused, shuttered, black, set at 45°
· 1 x USB double charger (5.2 V / 2.15 A)
· 2 x Keystone module CAT6 RJ45 coupling socket/ socket

Ready to customise

Max. 16A/230V~

Power cables and custom modules are available separately.

Part no. | Version

Power socket outlets

Anodised aluminium profile; power input: GST18 / power output: GST18

- 339.1018 | · 2 x UK 3.15A individually fused, shuttered, black, set at 45°, length 228.6 mm

Power socket outlets

Anodised aluminium profile; power input: GST18 / power output: GST18

- 339.1020 | · 4 x UK 3.15A individually fused, shuttered, black, set at 45°, length 356.1 mm

C**1 x custom module + power socket outlets**

Anodised aluminium profile; power input: GST18 / power output: GST18

- 902.1017 | · 2 x UK 3.15A individually fused, shuttered, black, set at 45°, length 276 mm

C**2 x custom module + power socket outlets**

Anodised aluminium profile; power input: GST18 / power output: GST18

- 902.024 | · 2 x UK 3.15A individually fused, shuttered, black, set at 45°, length 346.3 mm

C U**DESK 1 mit 1 x USB Doppel-Charger (5,2 V / 2,15 A), 1 x Custom Modul + Steckdosen Strom**

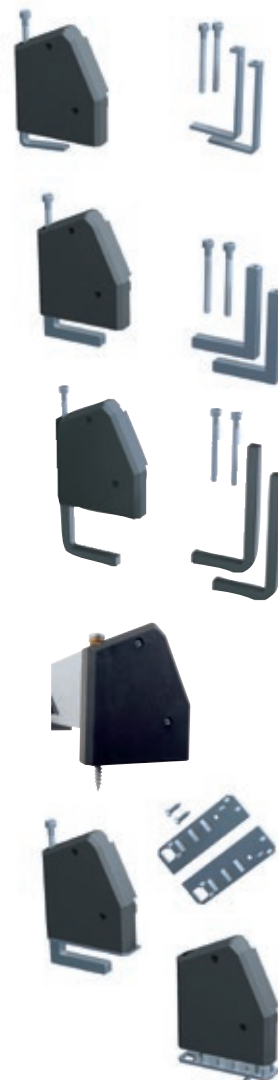
Aluminium-Profil eloxiert; Stromeingang: GST18/ Stromausgang: GST18

- 902.0184 | · 2 x UK 3,15 A einzeln abgesichert mit Kinderschutz, schwarz, um 45° gedreht, Länge 316,3 mm

**You can find suitable Wieland cables on page 63**

DESK 1 accessories

Part no.	Version
DESK 1 slimline brackets for tabletop/desktop thicknesses up to 50 mm	
918.001	Stainless steel, thickness 3 mm Contents: <ul style="list-style-type: none"> · 2 stainless steel mounting brackets · 2 M5 x 45 mm Allen bolts
DESK 1 standard bracket for tabletop/desktop thicknesses up to 50 mm	
930.120	Anodised aluminium, thickness approx. 9 mm Contents: <ul style="list-style-type: none"> · 2 x mounting clamps, anodised aluminium profile · 2 x M5 x 60 mm Allen bolts
DESK 1 long bracket for tabletop/desktop thicknesses up to 80 mm	
930.180	Mounting bracket, long, 50 - 80 mm Contents: <ul style="list-style-type: none"> · 2 x mounting clamp, black painted, similar to RAL9011 · 2 x M5 x 45 mm Allen bolts · 2 x M5 x 60 mm Allen bolts
Chipboard screw for DESK end caps for tabletop/desktop thicknesses over 15 mm	
930.183	Contents: <ul style="list-style-type: none"> · 2 x 4 x 90 mm screw · 2 x threaded brass sleeve
DESK 1 mounting plate	
930.182	Black plastic Mounting plates for attachment to DESK end caps Contents: <ul style="list-style-type: none"> · 2 x mounting plate · 2 x screw · 2 x TESA POWER STRIP





STEP

Fit for the future - step by step

STEP embodies the principle of modularity with absolute consistency. The system is ideal for the flexible delivery of power and data to workstations, partition systems, false floors and other connection types.



STEP combination options

You can plug separate modules together or combine them as you wish with a connecting cable. Thus STEP gives you your own custom power distribution system. Other plug-in connection systems (e.g. Wago Winsta, Woertz, Ensto) can be supplied on request.

Benefits at a glance

- Consistent modularity
- Versatile applications
- Standard connection system
- Can be expanded at any time
- Functional efficiency
- available with an aluminium or plastic profile
- possibility to connect multiple power strips together to form a modular system

STEP

For electricity distribution STEP uses the Wieland connector system as standard and can therefore be supplied with a variety of cable lengths. Other plug connection systems can also be supplied on request.

STEP delivers individual tailor-made solutions meeting all the requirements of modern power and data supply. In short: Fit for the future - step by step.

STEP – the all-round system designed for expansion



Perfectly tailored for the best connections

STEP is designed primarily as a simple electricity supply unit for office workstations. Permanently installed devices such as PCs, monitors, printers, etc. can be connected to STEP.

STEP power strips have a power input and a power output, each of which is built into the end caps on the face end. The Wieland GST18 plug connectors fitted are particularly tried-and-tested solutions for office use and have the coding and latch mechanism required to comply with the applicable standard.

Multiple fixing options

STEP power strips are versatile in their application. They can be fitted for example under tablespots/desktops, in cable ducts and in partitions. Different attachment options are available to suit these various applications.

STEP

Power cables and custom modules are available separately.

Part no.	Version
STEP BASE: Power socket outlets	
Length: approx. 220 mm (note special lengths)	
Plastic profile; power input: GST18 / power output: GST18	
906.1306	· 2 x UK 3.15A individually fused, shuttered, black, set at 45°
906.0059	· 2 x UK 3.15A individually fused, shuttered, black, set at 45°, 2 switches, length 244 mm
906.0055	· 4 x UK 3.15A individually fused, shuttered, black, set at 45°, length 322 mm
906.0060	· 4 x UK 3.15A individually fused, shuttered, black, set at 45°, 1 switches, length 364,7 mm
STEP ALU: 1 x custom module + power socket outlets	
Length: approx. 220 mm	
Aluminium profile; power input: GST18 / power output: GST18	
336.079	· 2 x UK 3.15A individually fused, shuttered, black, set at 45° (length 284.5 mm)



All STEP safety modules are compatible with STEP ALU and STEP BASE

Power cables and custom modules are available separately.

Part no. | Version

STEP ALU overvoltage protection, GST18 **Length: approx. 147 mm**

Aluminium profile; power input: GST18 / power output: GST18

336.003 | · Overvoltage protection 2 kV with function and fail indicator

STEP ALU overvoltage protection + mains and frequency filters, GST18 **Length: approx. 220 mm**

Aluminium profile; power input: GST18 / power output: GST18

336.004 | · Overvoltage protection 2 kV with function and fail indicator and mains filter 30 MHz

STEP ALU MCB, GST18 **Length: approx. 220 mm**

Aluminium profile; power input: GST18 / power output: GST18

336.015 | · Miniature circuit-breaker 16 A, 2-pole
· Characteristic B

STEP ALU RCD, GST18 **Length: approx. 220 mm**

Aluminium profile; power input: GST18 / power output: GST18

336.014 | · Residual current device, tripping current 30 mA, response time 30 ms, 2-pole

STEP ALU RCD, GST18 **Length: approx. 220 mm**

Aluminium profile; power input: GST18 / power output: GST18

906.067 | · Residual current device, tripping current 10 mA, response time 30 ms, 2-pole
· Power input: GST18i3 plug, power output: GST18i3 socket

STEP ALU RCD/MCB, GST18 **Length: approx. 220 mm**

Aluminium profile; power input: GST18 / power output: GST18

336.065 | · Combined RCD/MCB comprising:
· Residual current device, tripping current 30 mA, response time 30 ms, 2-pole
· Miniature circuit-breaker 16 A rated current, 400 V, 2-pole
· Characteristic B; 6 kA



You can also use the product configurator at bachmann.com

STEP accessories

Part no.	Version
----------	---------

Mounting accessories

- | | |
|---------|---|
| 375.502 | <p>Contents:</p> <ul style="list-style-type: none"> • 4 x 2.9 x 30 mm screw • 2 x cover strip for the end caps as optical finish (to be placed on the end caps where two power strips are linked together) • 1 x connection cover • 1 x end cap for power output socket |
|---------|---|

**Stainless steel mounting bracket**

- | | |
|---------|---|
| 940.096 | <ul style="list-style-type: none"> • For insertion into the rear of a STEP profile • Ideal for use with power strips with data connections • Packing unit: 2 items |
|---------|---|

**Stainless steel mounting bracket with elongated hole**

- | | |
|---------|--|
| 940.024 | <ul style="list-style-type: none"> • For insertion into the rear of a STEP profile • With elongated hole (keyhole) for screwing into place, ideal when using power strips with data connections • Packing unit: 1 left item, 1 right item |
|---------|--|

**Stainless steel mounting plate, flat**

- | | |
|---------|---|
| 940.097 | <ul style="list-style-type: none"> • For insertion into the rear of a STEP profile • For screw fixing e.g. under a desk or table • Packing unit: 2 items |
|---------|---|

**STEP cover plates**

- | | |
|---------|---|
| 375.529 | <ul style="list-style-type: none"> • Fit over the end caps of STEP power strips • Visual finish • Black plastic • Packing unit: 2 items |
|---------|---|

**Sheet steel mounting plate**

- | | |
|---------|---|
| 940.108 | <ul style="list-style-type: none"> • For insertion into rear of STEP profile • Tighten the nut on the threaded screw to fix the power strip in place <p>Contents:</p> <ul style="list-style-type: none"> • 1 mounting plate including M5 screw, washer and nut |
|---------|---|

**STEP plastic mounting clip**

- | | |
|---------|---|
| 918.025 | <ul style="list-style-type: none"> • For attaching STEP BASE and STEP ALU power strips • in suitable cut-outs in sheet steel (thickness 2.0 mm) <p>Contents:</p> <ul style="list-style-type: none"> • 2 x plastic mounting clip • 4 x screw 2.9 x 30 mm |
|---------|---|

**Earthed power supply cable to STEP unit, see Accessories section**

- Pre-assembled power supply cables with integrated earth connection
- Earthing of the power strip is independent of the installation
- Ideal in combination with STEP power strips (see from page 45)



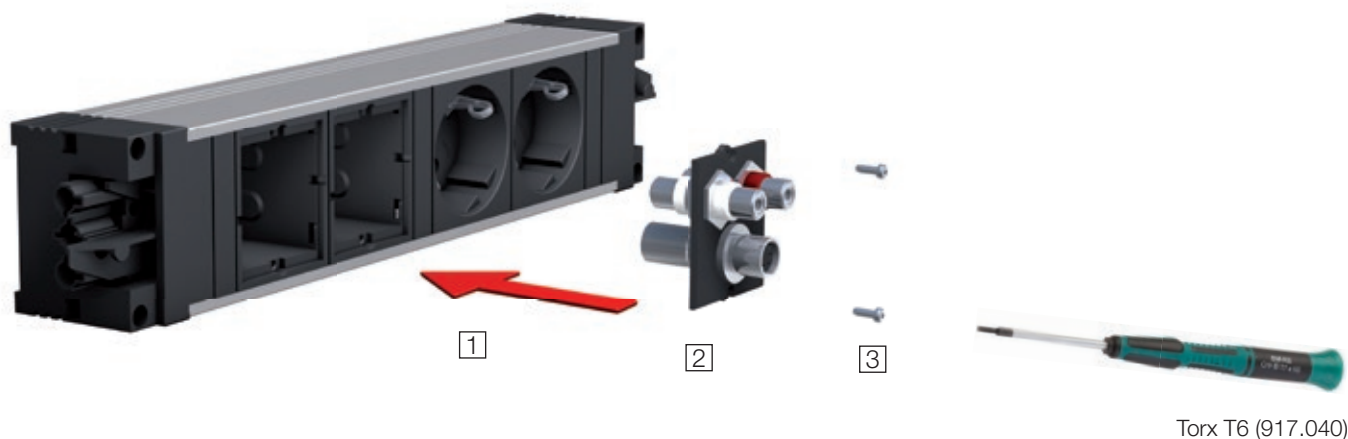


Custom modules

As versatile as your applications

Bachmann custom modules are the central components of video, audio and network connections. Their construction offers you simple and flexible installation in FACILITY SOLUTIONS, rack systems and electrical installations. The versatility of custom modules make Bachmann FACILITY SOLUTIONS even more flexible. With the easy-to-swap modules you can create units to meet the individual data, video and audio connection requirements of your customers quickly and simply.

Now Bachmann also offers this flexibility for 19" panel installations. The standard custom modules facilitate optimal configuration for every media and network connection requirement. Again here socket/socket or screw-terminal connections provide great simplicity of installation.



The ready to customise built-in frame [1] of Bachmann FACILITY SOLUTIONS accommodates the custom modules [2], which are fixed in place with two Torx screws. The custom modules can be easily exchanged by loosening the screws.



Custom modules in FACILITY SOLUTIONS

Individual configuration

Modern technology and strong ideas are at the heart of each and all Bachmann FACILITY SOLUTIONS. With expansion-compatible multiple-socket outlets and Facility custom modules for individual configuration, these systems provide the ideal basis for setting up flexible connections. Practical units provide secure networking in the office, while elegantly designed, concealed supply systems offer trouble-free communications for conferences. In addition to the socket outlets integrated ex factory, Bachmann Facility products include empty module spaces for individual configuration. Custom modules are supplied complete with screws.

The greatest flexibility - prepared for the future

Whenever you change the configuration you have the opportunity to upgrade your equipment to the latest state of the art. Built-in insulation protects you from contact with live parts. There is no requirement to recheck the electrical connections of the unit after changing modules, and the warranty is not affected.

You can find FACILITY SOLUTIONS products in the main Bachmann catalogue and in the separate FACILITY SOLUTIONS catalogue.

Modules for keystone data connections

All modules are supplied with 2 Torx T6 screws.



Part no.	Version
----------	---------

Custom module 2 x keystone frame

- | | |
|---------|---|
| 917.000 | <ul style="list-style-type: none"> Module, black, accepts 2 data sockets with keystone fitting Suitable for the data sockets listed below |
| 917.158 | <ul style="list-style-type: none"> Module, white, accepts 2 data sockets with keystone fixing Suitable for the data sockets listed below |

**Custom module 1 x keystone frame**

- | | |
|---------|--|
| 917.001 | <ul style="list-style-type: none"> Module, black, accepts 1 data socket with keystone fitting Suitable for the data sockets listed below |
| 917.159 | <ul style="list-style-type: none"> Module, white, accepts 1 data socket with keystone fixing Suitable for the data sockets listed below |

**Custom module 2 x keystone frame with metal holder**

- | | |
|---------|---|
| 917.061 | <ul style="list-style-type: none"> Module, black, accepts 2 data sockets with keystone fitting Keystone fitting with metal holder on rear of cover for high mechanical stresses Suitable for the data sockets listed below |
|---------|---|

**Custom module 1 x keystone frame with metal holder**

- | | |
|---------|--|
| 917.062 | <ul style="list-style-type: none"> Module, black, accepts 1 data socket with keystone fitting Keystone fitting with metal holder on rear of cover for high mechanical stresses Suitable for the data sockets listed below |
|---------|--|

Data connection for custom module frames

Socket / socket (Suitable data cables can be found in the accessories)

Part no.	Version
----------	---------

Keystone module CAT6 coupling socket/socket

- | | |
|---------|---|
| 940.044 | <ul style="list-style-type: none"> Type: BTR E-DAT Front: RJ45 (keystone fixing), rear: RJ45 (E-DAT mounting) Shielded |
|---------|---|

**Keystone module CAT6 coupling / socket / socket**

- | | |
|---------|---|
| 940.083 | <ul style="list-style-type: none"> Front: RJ45 (keystone fixing), rear: RJ45 (keystone fixing) Shielded |
|---------|---|

**Keystone module CAT6 coupling socket/socket**

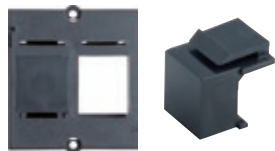
- | | |
|---------|---|
| 940.112 | <ul style="list-style-type: none"> Front: RJ45 (keystone fixing), rear: RJ45 (keystone fixing) Unshielded |
|---------|---|

**Keystone module CAT5e coupling socket/socket**

- | | |
|---------|---|
| 940.057 | <ul style="list-style-type: none"> Front: RJ45 (keystone fixing), rear: RJ45 (keystone fixing) Shielded |
|---------|---|

**Keystone module ISDN RJ12 socket/socket**

- | | |
|---------|---|
| 940.085 | <ul style="list-style-type: none"> Front: RJ12 (keystone fixing), rear: RJ12 (keystone fixing) Unshielded |
|---------|---|

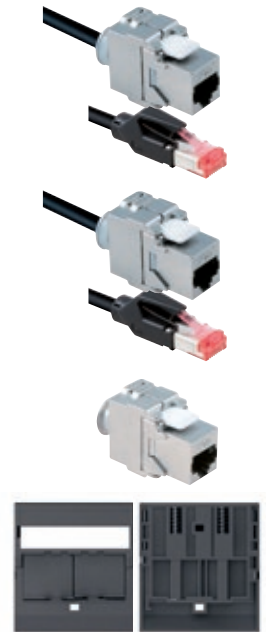
**Keystone socket cover**

- | | |
|---------|---|
| 917.057 | <ul style="list-style-type: none"> Socket cover, clips into an empty keystone socket Can be used as a placeholder for sockets inserted subsequently Suitable for 917.000 / 917.001 / 917.061 / 917.062 |
|---------|---|

Data connections for custom module frames

Socket/supply cable

Part no.	Version
CAT6a 10GB Patch cable plug / socket 3.0 m	
918.033	<ul style="list-style-type: none"> Front: Socket RJ45 CAT6a TKM 10GB Cable, black, with RJ45 plug Shielded
CAT6a 10GB Patch cable plug / socket 5.0 m	
918.034	<ul style="list-style-type: none"> Front: Socket RJ45 CAT6a TKM 10GB Cable, black, with RJ45 plug Shielded
CAT6a 10GB socket TKM	
918.035	<ul style="list-style-type: none"> CAT6 connector socket TKM 10GB Without cable (designed for tool-free connection of data cable) Shielded
RJ 45 shutter	
930.143	<ul style="list-style-type: none"> Cover for keystone custom module Does not require tools Suitable for custom modules 917.000/917.001/917.051/917.052 With paper labelling strips Universally suits 1 and 2 data connections Ideal as dust cover for data socket contacts when not in use



Keystone media technology links

Part no.	Version
Keystone module 1 x HDMI Black	
918.041	<ul style="list-style-type: none"> Front: HDMI socket Rear: HDMI socket without cable Resolution up to UHD (4K) possible Fits into keystone frame 917.000 or 917.001 Requires approx. 85 mm installation depth
Keystone module 1 x 3.5 mm miniature jack Black	
917.157	<ul style="list-style-type: none"> Front: 3.5 mm stereo miniature jack socket Rear: 3.5 mm stereo miniature jack socket with approx. 0.1 m cable Fits into keystone frame 917.000 or 917.001 Requires approx. 65 mm installation depth
Keystone module 1 x mini display port Black	
917.214	<ul style="list-style-type: none"> Front: Mini display port socket Rear: Display port plug with approx. 0.5 m cable 0.5 m breakout cable Requires approx. 85 mm installation depth





USB 3.0 accessories

USB 3.0 keystone modules



Part no.	Version
----------	---------

Keystone module USB 3.0 A/B USB

Black

- | | |
|---------|--|
| 917.400 | <ul style="list-style-type: none"> Front: USB A socket / rear: USB B socket Fits into keystone frame 917.000 or 917.001 Requires approx. 85 mm installation depth |
|---------|--|

Keystone module USB 3.0 B/A

Black

- | | |
|---------|--|
| 917.401 | <ul style="list-style-type: none"> Front: USB B socket / rear: USB A socket Fits into keystone frame 917.000 or 917.001 Requires approx. 85 mm installation depth |
|---------|--|

Keystone module USB 3.0 A/A (straight through)

Black

- | | |
|---------|--|
| 917.120 | <ul style="list-style-type: none"> Front: USB socket A / rear: USB socket A Fits into keystone frame 917.000 or 917.001 Requires approx. 85 mm installation depth |
|---------|--|

USB 3.0 connecting cable



Part no.	Length	Version
----------	--------	---------

USB 3.0 A/B connecting cable

- | | | |
|----------|-------|--|
| 917.1205 | 1.0 m | <ul style="list-style-type: none"> USB A/B connecting cable, black |
| 917.1203 | 3.0 m | <ul style="list-style-type: none"> End 1: Plug A / end 2: Plug B Fully wired |

USB 3.0 A/A connecting cable (straight through, not for host-to-host connection)

- | | | |
|---------|-------|--|
| 918.176 | 1.0 m | <ul style="list-style-type: none"> USB A/A connecting cable, black, grey plug |
| 918.178 | 2.0 m | <ul style="list-style-type: none"> End 1: Plug A / end 2: Plug A |
| 918.177 | 3.0 m | <ul style="list-style-type: none"> Can be used with custom modules with USB A socket (e.g. 917.018 / 917.019 / 917.400 / 917.401) Fully wired straight through, not suitable for host-to-host connection |

USB 3.0 connecting cable for host-to-host connection

Part no.	Length	Version
----------	--------	---------

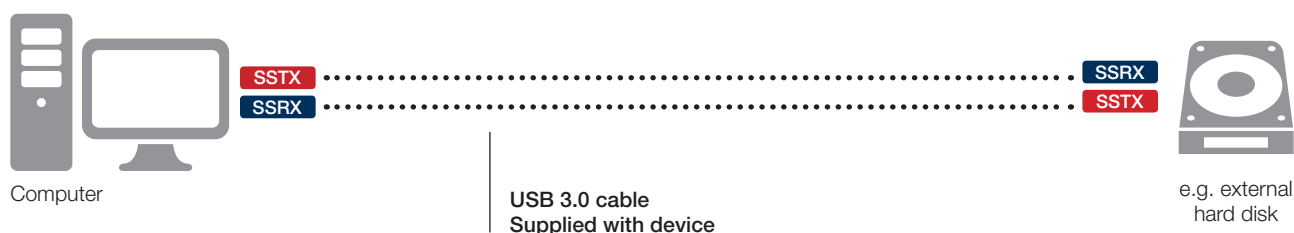
USB 3.0 A/A connecting cable (crossed, for host-to-host connection)

- | | | |
|---------|-------|---|
| 918.081 | 1.0 m | <ul style="list-style-type: none"> USB A/A connecting cable, black, black plug |
| 918.083 | 1.8 m | <ul style="list-style-type: none"> End 1: Plug A / end 2: Plug A |
| 918.082 | 3.0 m | <ul style="list-style-type: none"> Can be used with custom modules with USB A socket (e.g. 917.018 / 917.019 / 917.400 / 917.401) Fully wired, 3.0 data pairs crossed for host-to-host connection |

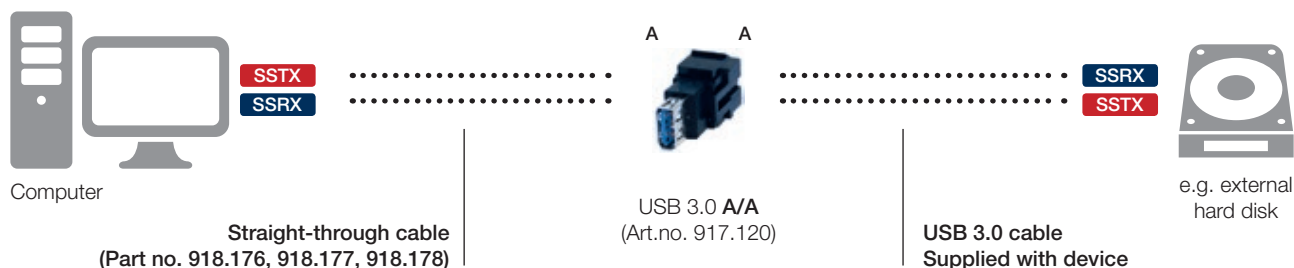
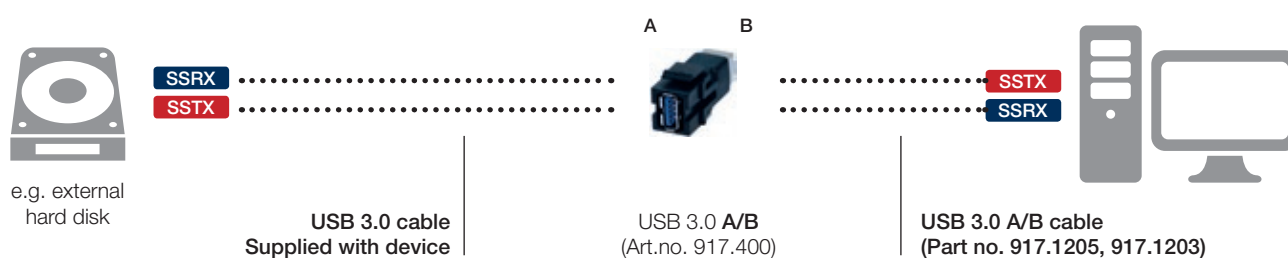
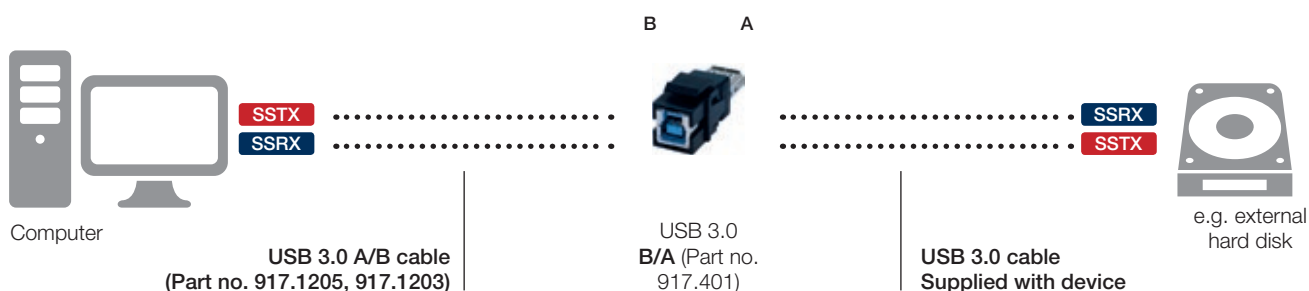
The right components

USB 3.0

Conventional USB 3.0 direct connection, without keystone modules



Connection with A/B or B/A keystone module for USB 3.0 connection



Please note

Unlike USB 2.0, USB 3.0 cables have an extra earth connection and two additional signal wire pairs:

SSTX+ and SSTX- for data transmission from host to device, SSRX+ and SSRX- for data transmission from device to host.

Active components require straight-through USB 3.0 cables for communication. Because our USB 3.0 A/A keystone module is straight-through, a straight-through cable must also be used. If the components are not used as described above (crossed USB cables), the data speed of USB 3.0 is reduced to USB 2.0 speed even though only USB 3.0 components are being used. USB 3.0 SuperSpeed data connections are only possible up to a total cable length of 4.5 m. If keystone modules are used, shorter cables are required. Cable quality is an important factor for high data rates. We recommend Bachmann USB 3.0 cables.



Cable bushing



Front Rear

**Custom module 1 x data cable bushing**

- 917.032
- Module with drill hole and 2-part cable bushing for data cables up to 11 mm in diameter

**Custom module 1 x VGA cable bushing**

- 917.033
- 1 x 2-part cable bushing, ideal for routing VGA cables, without cable.
 - Suits cables up to 24 mm in diameter

Custom module, 3-way cable bushing

- 917.082
- Plastic frame, black
 - For 1 cable with diameter < 14 mm and 2 cables with diameter < 10 mm
 - Incl. 2 x T6 Torx screws for assembly

Video and audio technology



Part no. | Version

Custom module VGA, jack, HDMI

- 917.222
- Custom module equipped with:
 - Breakout cables 0.2 m, socket-socket, for VGA, audio (3.5 mm stereo jack)
 - HDMI, HDMI mounting using a keystone clip

Front Rear

**Custom module 1 x VGA + miniature jack****Black**

- 917.045
- Front: VGA socket and 3.5 mm stereo miniature jack
 - Rear: VGA socket and 3.5 mm stereo miniature jack with approx. 0.1 m cable
 - Requires approx. 70 mm installation depth

Front Rear

**Custom module 1 x DVI-I + miniature jack****Black**

- 917.021
- Front: DVI-I socket and 3.5 mm stereo miniature jack
 - Rear: DVI-I socket and 2 x cinch audio stereo (red + white) with approx. 0.1 m cable
 - Requires approx. 75 mm installation depth

**Custom module 1 x display port****Black**

- 917.145
- Front: Display port socket
 - Rear: Display port socket without cable
 - Requires approx. 70 mm installation depth

Part no.	Version
Custom module 1 x cinch video + 2 x cinch audio stereo	
917.026	<ul style="list-style-type: none"> Front: Cinch video (yellow) + 2 x cinch audio stereo (red + white) socket Rear: Cinch video + 2 x cinch socket without cable
Custom module 1 x XLR 3-pole socket	
917.096	<ul style="list-style-type: none"> Front: XLR 3-pole socket Rear: Screw terminal 3-pole Requires approx. 40 mm installation depth



USB 3.0 keystone modules

Part no.	Version
Keystone module USB 3.0 A/B USB	
917.400	<ul style="list-style-type: none"> Front: USB A socket / rear: USB B socket Fits into keystone frame 917.000 or 917.001 Requires approx. 85 mm installation depth
Keystone module USB 3.0 B/A	
917.401	<ul style="list-style-type: none"> Front: USB B socket / rear: USB A socket Fits into keystone frame 917.000 or 917.001 Requires approx. 85 mm installation depth
Keystone module USB 3.0 A/A (straight through)	
917.120	<ul style="list-style-type: none"> Front: USB socket A / rear: USB socket A Fits into keystone frame 917.000 or 917.001 Requires approx. 85 mm installation depth



Data transmission



Part no.	Version
----------	---------

Custom module 1 x FireWire**Black**

- | | |
|---------|--|
| 917.037 | <ul style="list-style-type: none"> · Front: FireWire 6-pole socket · Rear: FireWire 6-pole socket · Requires approx. 85 mm installation depth |
|---------|--|

Retractable cable for USB port, data cable can be extended to a length of approx. 500 mm

- | | |
|---------|--|
| 917.300 | <ul style="list-style-type: none"> · Front: USB A 2.0 plug; rear: USB A 2.0 socket · Fixed cable on rear with length of approx. 150 mm |
|---------|--|

**Retractable cable for network port, data cable can be extended to a length of approx. 700 mm**

- | | |
|---------|---|
| 917.301 | <ul style="list-style-type: none"> · Front and rear: RJ45 plug CAT3 · Fixed cable on rear with length of approx. 150 mm |
|---------|---|

**Retractable cable for mobile devices, data cable can be extended to a length of approx. 480 mm**

- | | |
|---------|---|
| 917.302 | <ul style="list-style-type: none"> · Front with 3 in 1 plug: Apple® 30PIN plug, micro USB 2.0A plug, Mini USB 2.0A plug; rear: USB A 2.0 socket · Fixed cable on rear with length of approx. 150 mm |
|---------|---|



Power transmission



Part no.	Version
----------	---------

Custom module Power Con blue (power input)**Black**

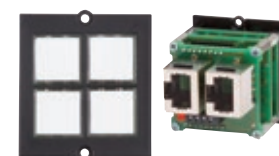
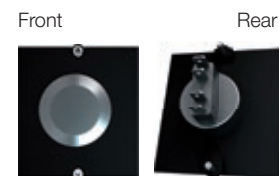
- | | |
|---------|---|
| 917.112 | <ul style="list-style-type: none"> · Front: Power Con socket, blue · Rear: Screw terminal, including 2 crimp sleeves and cover cap · Requires approx. 40 mm installation depth |
|---------|---|

**Custom module Power Con grey (power output)****Black**

- | | |
|---------|---|
| 917.113 | <ul style="list-style-type: none"> · Front: Power Con socket, grey · Rear: Screw terminal, including 2 crimp sleeves and cover cap · Requires approx. 40 mm installation depth |
|---------|---|

Control

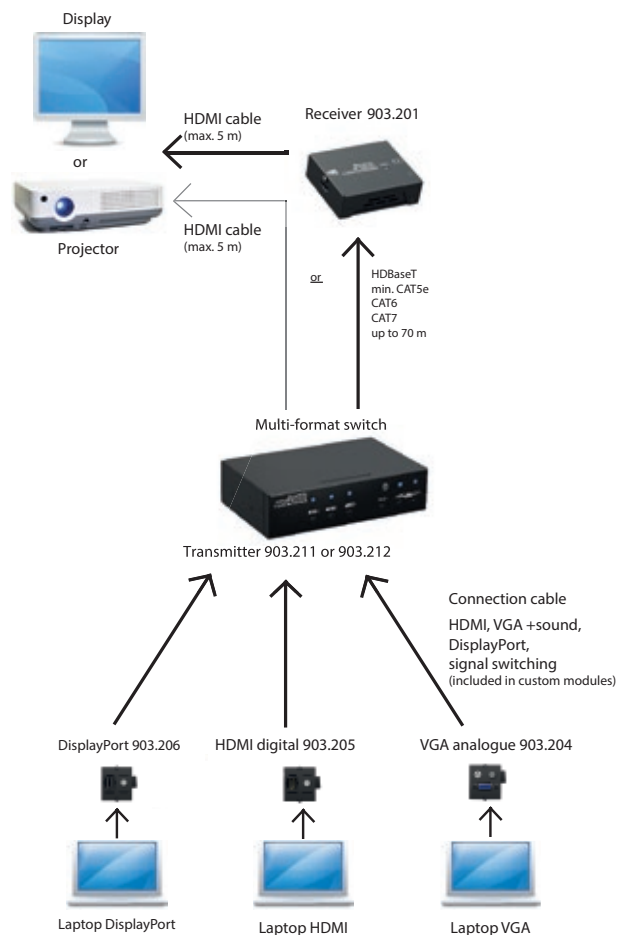
Part no.	Version	
Custom module with stainless steel button		Black
917.046	<ul style="list-style-type: none"> • Front: Stainless steel button • Switching capacity: 50 mA/24 V/DC • Rear: Solder pins 2-pole • Requires approx. 30 mm installation depth 	
Custom module with stainless steel button, lights up blue		Black
917.047	<ul style="list-style-type: none"> • Front: Stainless steel button, lights up blue (ring illuminated) • Switching capacity: 50 mA/24 V/DC • Rear: Solder pins 4-pole • Requires approx. 30 mm installation depth 	
Custom module with 4-key keypad for media control unit		Black
917.193	<ul style="list-style-type: none"> • 4-way universal pushbutton module • for connecting to all controller programmable buttons, illuminated blue • incl. various inserts with pictograms 	



Accessories

Part no.	Version	
Custom Module blank cover		Black
917.009	<ul style="list-style-type: none"> • Blank cover as placeholder or for you to mount your own connector • Material: plastic, black, thickness 1.8 mm 	
Custom module blank cover with screw dome		Black
917.010	<ul style="list-style-type: none"> • Blank cover as placeholder or for you to mount your own connector • Screw domes on rear of module for fastening • e.g. boards or blank holders • Material: Plastic, black, thickness 1.8 mm 	
Torx T6 screwdriver		Black
917.040	<ul style="list-style-type: none"> • Torx T6 screwdriver to fit the screws on the custom modules 	





HDBaseT Switch

The plug-and-play solution for meeting points and meeting rooms

Share information from up to 4 devices (laptops) at the touch of a button. The buttons are already integrated in the relevant CUSTOM modules. The signals from the changeover switch to the display or projector are either transferred via HDBaseT or as original HDMI signals.

Benefits at a glance

- Zero-loss transmission of image and sound signals via CAT cable up to 70 metres
- Simple cabling
- Plug-and-play
- No programming needed
- Resolution up to UHD (4K) possible
- Compatible with HDBaseT-capable displays and projectors

HDBaseT Switch

Part no.	Version
----------	---------

HDBaseT transmitter with 3 inputs

- | | |
|---------|--|
| 903.211 | <ul style="list-style-type: none">• Input: 2 x HDMI, 1 x VGA + audio• HDMI output + HDBaseT via RJ45• max. 70 metre cable length• incl. control box |
|---------|--|



HDBaseT transmitter with 4 inputs

- | | |
|---------|--|
| 903.212 | <ul style="list-style-type: none">• Input: 2 x HDMI, 1 x VGA + audio , 1 x DisplayPort• HDMI output + HDBaseT via RJ45• max. 70 metre cable length• incl. control box |
|---------|--|



HDBaseT receiver

- | | |
|---------|---|
| 903.201 | <ul style="list-style-type: none">• HDBaseT input via RJ45• HDMI output, HDCP compatible |
|---------|---|



Mounting accessories

Mounting bracket

- | | |
|---------|---|
| 903.203 | <ul style="list-style-type: none">• Mounting bracket for HDBaseT transmitter, x 2 |
|---------|---|



Accessories for transmitter

CUSTOM modules for integration into our desk connection panels

VGA analogue

- | | |
|---------|---|
| 903.204 | <ul style="list-style-type: none">• Custom module VGA, miniature jack and button• 1 x VGA 15-pole socket/plug• 1 x 3.5 mm miniature jack socket/plug• 1 x blue illuminated button with RJ12 plug• Cable lengths 1 m |
|---------|---|



DisplayPort digital

- | | |
|---------|--|
| 903.206 | <ul style="list-style-type: none">• Custom module DisplayPort, button• 1 x DisplayPort socket/plug• 1 x blue illuminated button with RJ12 plug• Cable lengths 1 m |
|---------|--|



HDMI digital

- | | |
|---------|--|
| 903.205 | <ul style="list-style-type: none">• Custom module HDMI, button• 1 x HDMI socket/plug• 1 x blue illuminated button with RJ12 plug• Cable lengths 1 m |
|---------|--|



Accessories for cabling

Functionality of the entire system is only ensured with these components

VGA analogue cabling

VGA 15-pole HD combi cable with miniature jack, black, VGA plug 15 HD, miniature jack plug 3.5 mm

- | | |
|---------|--|
| 918.066 | <ul style="list-style-type: none">• Length 1 m |
|---------|--|



DisplayPort digital cabling

DisplayPort connection cable, black, 4K x 2K, connecting cable with plug-plug

- | | |
|----------|--|
| 918.0951 | <ul style="list-style-type: none">• Length 1 m |
|----------|--|

HDMI digital cabling

HDMI connection cable, black, 4K x 2K, HDMI 19-pole plug

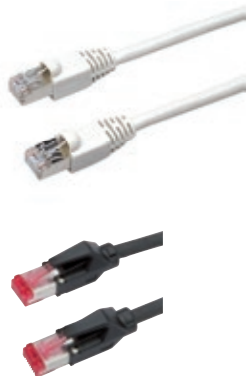
- | | |
|----------|--|
| 918.0191 | <ul style="list-style-type: none">• Length 1 m |
| 918.0192 | <ul style="list-style-type: none">• Length 3 m |
| 918.0193 | <ul style="list-style-type: none">• Length 5 m |



! More accessories are available in our catalogue and on request.

Data cables → Transfer of data within various categories

Used for network and IP telephone services



Part no.	Length	Version
----------	--------	---------

CAT6 patch cable plug / plug

940.040	3.0 m	· CAT6 cable, shielded, colour grey
940.041	5.0 m	· Conforms to ISO / IEC 11801 and EN 50173 · Ends 1 and 2: RJ45 plug with protective rubber sleeve and protective tongue for interlock · Suitable for e.g. CAT6 socket / socket 940.044

CAT6a patch cable plug / plug

918.006	1.0 m	· CAT7 cable, shielded, colour black
918.007	3.0 m	· Conforms to IEC 61156-6
918.008	5.0 m	· Ends 1 and 2: RJ45 Hirose TM12 CAT6a plug with protective rubber sleeve and unlocking tongue · Suitable for e.g. CAT6 socket / socket 940.044

VGA 15-pole HD with or without miniature jack cable (stereo 3.5 mm) →

Transmission of analogue image and audio signals



Part no.	Length	Version
----------	--------	---------

VGA 15-pole HD combi cable with miniature jack

918.066	1.0 m	· High quality cable, high flexibility, colour black
918.067	3.0 m	· End 1: 1 x VGA plug 15 HD, 1x miniature jack plug 3.5 mm
918.068	5.0 m	· End 2: 1 x VGA plug 15 HD, 1x miniature jack plug 3.5 mm
918.069	10.0 m	· Plug with metal housing and shielding, · additional ferrite cores are not needed · can be used for custom modules with VGA + · Mini stereo jack socket / socket (e.g. 917.045 etc.)

VGA 15-pole HD

918.009	1.0 m	· High quality cable, flexible, colour black
940.047	3.0 m	· End 1: 1 x VGA plug -15 HD
940.048	5.0 m	· End 2: 1 x VGA plug -15 HD · Can be used with custom modules with VGA socket / socket (e.g. 917.011)

DisplayPort connecting cable → digital transmission of image and audio signals

Part no.	Length	Version
DisplayPort digital cabling		
918.0951	· 1.0 m	· DisplayPort connection cable, colour black, 4K x 2K
918.0952	· 3.0 m	· Connecting cable with plug-plug
918.0953	· 5.0 m	

HDMI connecting cable → digital transmission of image and audio signals

Part no.	Length	Version
HDMI connecting cable		
918.0191	1.0 m	· HDMI cable, colour black
918.0192	3.0 m	· HDMI standard 4K x 2K
918.0193	5.0 m	· End 1: 19-pole HDMI plug · End 2: 19-pole HDMI plug · Can be used with custom modules with HDMI socket/socket (e.g. 918.040)
918.0201	7.5 m	· HDMI cable, colour black · HDMI standard 4K x 2K · End 1: 19-pole HDMI plug · End 2: 19-pole HDMI plug · Long distance · Solid metal · Can be used with custom modules with HDMI socket/socket (e.g. 918.040)



For cable lengths, we recommend a maximum total length of up to 7.5 m to ensure the HDMI standard quality of 4K x 2K.

DVI-I connecting cable → digital transmission of image signals

(compatible with DVI-A and DVI-D plug-in connectors)

Part no.	Length	Version
DVI-I connecting cable		
918.017	3.0 m	· DVI cable, colour black
918.018*	5.0 m	· End 1: 1 x DVI plug · End 2: 1 x DVI plug · Can be used with custom modules with DVI-I socket / socket (e.g. 917.021 / 917.078)



3.5 mm miniature socket connection cable → transmission of audio signals



Part no.	Length	Version
----------	--------	---------

3.5 mm miniature jack connecting cable for audio signals

918.010	1.5 m	· 3.5 mm miniature stereo jack connecting cable, colour black
918.011	2.5 m	· End 1: 3.5 mm miniature stereo jack plug
918.012	5.0 m	· End 2: 3.5 mm miniature stereo jack plug · can be used for custom modules with stereo jack · socket / socket (e.g. 917.045 / 917.157)

USB 3.0 connecting cable



Part no.	Length	Version
----------	--------	---------

USB 3.0 A/B connecting cable

917.1205	1.0 m	· USB A/B connecting cable, black
917.1203	3.0 m	· End 1: Plug A / end 2: Plug B · Fully wired

USB 3.0 A/A connecting cable (straight through, not for host-to-host connection)

918.176	1.0 m	· USB A/A connecting cable, black, grey plug
918.178	2.0 m	· End 1: Plug A / end 2: Plug A
918.177	3.0 m	· Can be used with custom modules with USB A socket · (e.g. 917.400 / 917.401) · Fully wired straight through, not suitable for host-to-host connection



USB 3.0 connecting cable for host-to-host connection

Part no.	Length	Version
----------	--------	---------

USB 3.0 A/A connecting cable (crossed, for host-to-host connection)

918.081	1.0 m	· USB A/A connecting cable, black, black plug
918.083	1.8 m	· End 1: Plug A / end 2: Plug A
918.082	3.0 m	· Can be used with custom modules with USB A socket · (e.g. 917.018 / 917.019 / 917.400 / 917.401) · Fully wired, 3.0 data pairs crossed for host-to-host connection



FireWire connecting cable → transmission of data




Part no.	Length	Version
----------	--------	---------

FireWire connecting cable


918.024	4.5 m	· FireWire connecting cable, colour black · End 1: FireWire 6-pole plug · End 2: FireWire 6-pole plug · Can be used with custom modules with FireWire socket / socket (e.g. 917.037)
---------	-------	---

Device supply cable with additional earth connection

- Pre-assembled power supply cables with integrated earth connection
- The power strip has integrated earth connection
- Ideal in combination with STEP power strips (see from page 45)
- Table-mounted frames can be earthed independently of the power strip fitted in them

Part no.	Length	Version	
Device supply cable, GST18, plug UK 13 A			Black
375.068	2.0 m	• Cable: H05VV-F 3G 1.5 mm ²	
375.069	3.0 m	• End 1: UK 13 A plug	
375.070	4.0 m	• End 2: Wieland GST18i3 socket	
375.0048	5.0 m	• End 2: Wieland GST18i3 socket	

Cables with ST18 connector system (old system, cannot be plugged in under load)

Part no.	Length	Version	
Device extension cable, ST18/ST18			Black
375.071	0.5 m	• Cable: H05VV-F 3G 1.5 mm ²	
375.072	1.0 m	• End 1: Wieland ST18/3 plug	
375.073	1.5 m	• End 2: Wieland ST18/3 socket	
375.064	3.0 m		



Connectors / distributors

Part no.	Version	Version		
Inter-coupling			Black	
No interlock				
375.500	GST/GST	<ul style="list-style-type: none">· For easy connection of, for example,· 2 STEP power strips with the same· or different plugging systems· 1 x input (plug) and 1 x output (socket)		
375.515	GST/ST			
375.516	ST/GST			
Multiplier, GST18				
For power distribution				
375.101	1 x input, 2 x output (1)	<ul style="list-style-type: none">· Input: 3-pole plug· Output: 3-pole socket		
375.102	1 x input, 2 x output (2)			
375.105	1 x input, 3 x output (3)			



Cable management

Perfect installation solutions

Bachmann banishes unwieldy cables from workstations. The KABELSCHLANGE® cable management system allows the optimum routing of cables at workstations between desk, floor box, wall duct and the various devices.

Flexible cable management system

- The links are safe to step on and break-proof, and can be moved about relative to one another.
- The power strip has integrated earth connection
- 2 connector shoulders for the transmission of forces (including torques and lateral forces)
- Special geometry enables individual cables to be unfurled through the sides of the links without risking crushing

Part no.	Colour	Version
----------	--------	---------

Kabelschlange® Pro (for horizontal and vertical cable routing)

930.032	Black	<ul style="list-style-type: none"> Increased resistance to being stepped on even in high foot traffic areas such as passages
930.033	Silver	<ul style="list-style-type: none"> 5 chain links can withstand short-term loads of up to 120 kg 2-chamber system to separate data and power cables Can also be connected directly to Kabelschlange® Classic 34 chain links, W x H: approx. 90 x 24 mm Length (separated): approx. 100 cm, (pushed together): approx. 70 cm


Kabelschlange® Classic (for horizontal and vertical cable routing)

930.030	Black	<ul style="list-style-type: none"> 3-chamber system to separate low-current, data and power cables
930.031	Silver	<ul style="list-style-type: none"> 46 chain links, W x H: approx. 53 x 23 mm Length (separated): approx. 100 cm, (pushed together): approx. 69 cm


Kabelschlange® Premium Set (for vertical cable routing)

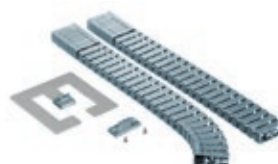
930.049	Black	<ul style="list-style-type: none"> Stylish premium set:
930.050	Silver	<ul style="list-style-type: none"> 16 chain links, W x H: approx. 70 x 35 mm 1 x metal base plate in selected colour 1 x desk attachment in selected colour The chain links can be pushed together completely to form an enclosed, self-locking, elliptical cable duct. 2-chamber system to separate data and power cables Length incl. base plate and desk attachment approx. 78 cm Length without accessories approx. 75 cm Length (pushed together): approx. 59 cm in set


Kabelschlange® Quadro Set (for vertical cable routing)

930.016	Black	<ul style="list-style-type: none"> Functional set with a strong design element:
930.017	Silver	<ul style="list-style-type: none"> 23 quadratic chain links, W x H: approx. 45 x 45 mm 1 x metal base plate in selected colour 1 x desk attachment in selected colour The Quadro system is very stable and can therefore be used for ceiling-based installations for room heights of up to approx. 5 metres. 2-chamber system to separate data and power cables Length incl. base plate and desk attachment approx. 76 cm


Kabelschlange® FLEX II Set (for vertical cable routing)

930.022	Black	<ul style="list-style-type: none"> Compact and flexible set:
930.023	Silver	<ul style="list-style-type: none"> 38 chain links, W x H: approx. 55 x 22 mm 1 x metal base plate in appropriate colour 1 x desk attachment in appropriate colour 2-chamber system to separate data and power cables and for ceiling suspensions Length incl. Base plate and desk attachment approx. 75 cm


Kabelschlange® FLEX II Set (as addition to set part no.: 930.022 and 930.023)

930.020	Black	<ul style="list-style-type: none"> for seating/ standing combinations
930.021	Silver	<ul style="list-style-type: none"> 54 chain links, length approx. 100 cm

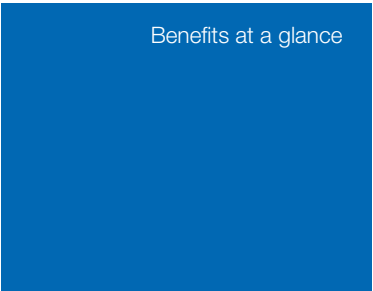


Wrap textile-fibre sleeves

Wrap textile-fibre sleeves bundle and protect cables and wires in office and home environments.

The elastic braided sheath with its monofilament fibres assures fire and abrasion resistance and is also ideal for professional and industrial use.

Automatic Wrap



Benefits at a glance

- Simple installation with low costs and low labour input
- More flexible than coiled or wound solutions
- 25% overlap for secure cable bundling
- Resistant to chemicals and solvents
- Halogen-free
- Resistant to cuts and abrasions
- Retains its shape within operating temperature range -75 °C to +125 °C

Part no.	Length	Version
----------	--------	---------

Automatic Wrap		
Dimensions: diameter 2.54 cm = 1 inch		
930.900	1.0 m	· Black
930.901	2.0 m	· Black
930.902	3.0 m	· Black

Automatic Wrap		
Dimensions: diameter 5.08 cm = 2 inches		
930.903	1.0 m	· Black
930.904	2.0 m	· Black
930.905	3.0 m	· Black





**BACH
MANN**

Bachmann Electrical Engineering Ltd.

27 Old Gloucester Street

WC1N3AX London

Great Britain

Telephone +44 1354 692 225

sales@bachmann.com / www.bachmann.com